

Installation Manual
Long Arm Upgrade Kit Instructions
2007-2011 Jeep Wrangler and Wrangler Unlimited
 Last Revision No.: 8/31/11
 PN – 4808100/2108100/1908100



Thank you for purchasing a Clayton Off Road suspension.

Please check to make sure you have all necessary parts before you start your install.

4808100 – JK Front Long Arm Upgrade Kit			
1	1908010	JK Long Front Lower Control Arm Kit (pair)	
1	1808101	JK Front upper Control Arm Kit (pair)	
1	2108100	JK Long Arm 3 Piece Cross Member	
2108100 – JK Long Arm 3 Piece Cross Member			
1	JKCML	JK cross member left (driver side)	
1	JKCMC	JK cross member center	
1	JKCMR	JK cross member right (passenger side)	
2	JKCM06	Top mounting plate	
4	JKCM05	Side mounting plate	
4	JKCM11	Outside Mounting Plate	
6	94286	3/8"-16x1" Flat Head Socket Cap Screw	
2	18950	9/16"-18 x 3-3/4" SAE J429 Grade 8 Hex Cap Screw	
4	514071	9/16" SAE Hard Washer	
2	368168	9/16-18 Lock Nut	
32	15103	3/8"-16 x 3/4" Grade 8 Hex Cap Screw	
28	33893	3/8" High Alloy Lock Washer	
2	0133815	3/8" Yellow Zinc Hard Flat Washer	
1908100 – JK Long Front Control Arm Kit			
1	1908001	JK front lower passenger arm	
1	1908002	JK front lower driver arm	
2	1808101	JK front upper control arm	
2	0154011	M12-1.75x90mm 10.9 931 Hex Head Cap Screw	
4	40359	12 mm Flat Washer	
2	90683	M12-1.75 Top Lock Nut	

If you are missing any of the above items, or are unclear about what parts you need, please call and ask before you begin your installation process.

Clayton Off Road Mfg. – 1261 Meriden Road – Waterbury – CT – 06705 – (203) 757-0339 sales@claytonoffroad.com

Note : The new 2007+ Jeep Wrangler JKs are equipped with an Electric Stability Program (ESP). Electronic Stability Program aids the driver in maintaining vehicle directional stability, providing oversteer and understeer control to maintain vehicle behavior on various road surfaces. This function is affected when lifting this vehicle and may not function properly. It is highly important to center the steering wheel. Please drive cautiously until you know how your vehicle will react.

Installation Manual
Long Arm Upgrade Kit Instructions
2007-2011 Jeep Wrangler and Wrangler Unlimited
 Last Revision No.: 8/31/11
 PN – 4808100/2108100/1908100

Note : It maybe necessary that a front CV shaft be used with this lift on either 2 and 4 door models. 2 door models may also require a CV rear driveshaft.

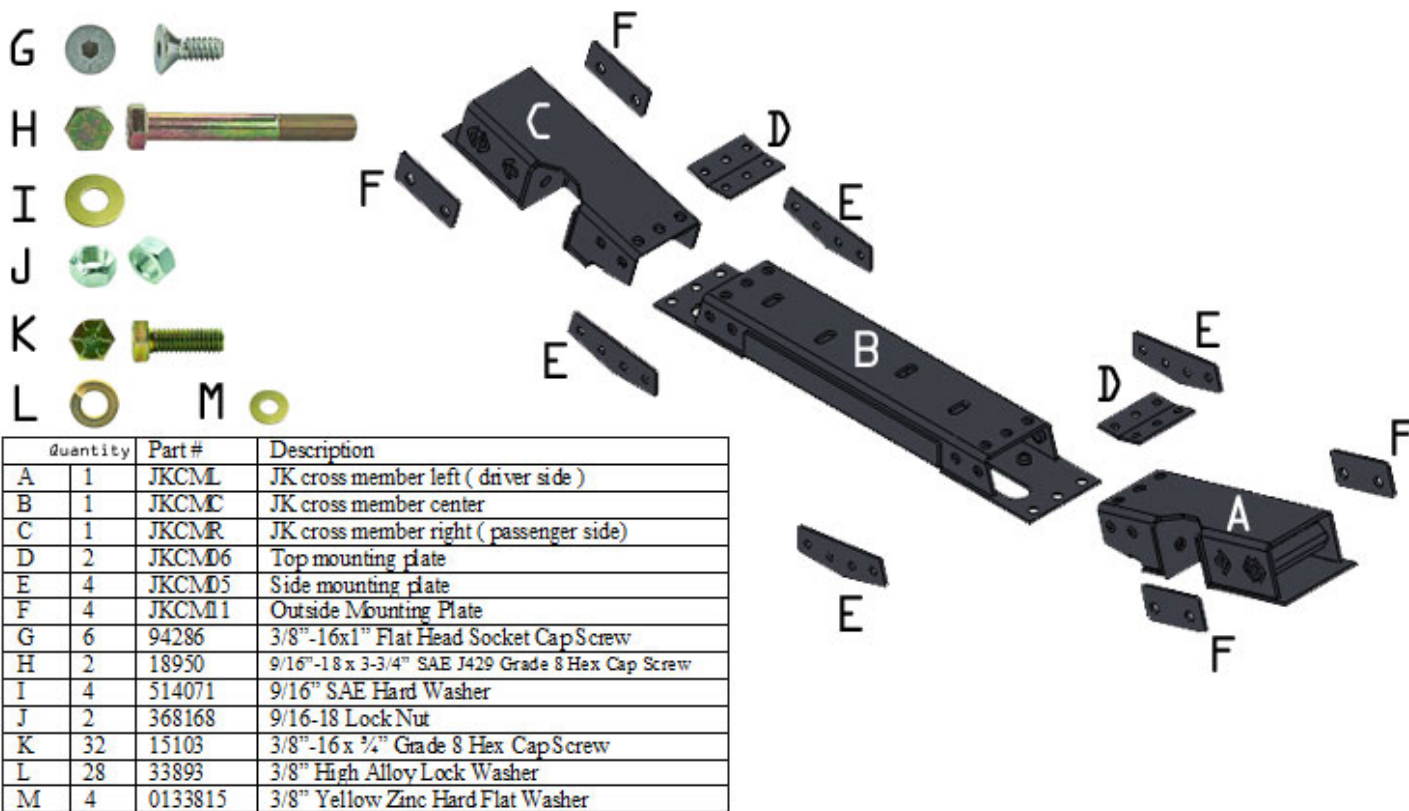
Note: This front long arm upgrade kit is intended to be used on the 2007-2011 Jeep Wrangler and Wrangler Unlimited JK, with 3.5 to 8 inches of lift.

Tool requirements

1. Four large jack stands, ramps or a 4-post drive on lift works best.
2. Various wrenches and shop tools for removing and installing control arms.
3. Grinder, plasma cutter or some shop tool to cut off lower oem frame brackets.
3. A 1 7/16 wrench is needed to tighten the upper control arm jam nuts, and a 46mm wrench is needed to tighten the lower control arm jam nuts.

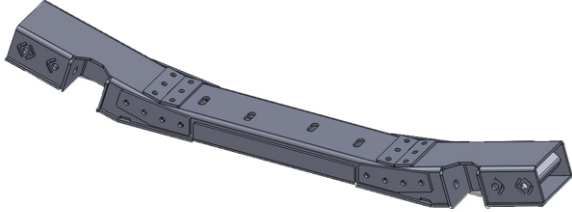
Front Cross Member Installation Procedure

1. Support drivetrain, and remove oem cross member and the oem skid plates if equipped. Retain all oem hardware as some maybe reused.
2. Assemble your new 3 piece cross member. Below is an exploded view of the cross member and where each part goes. Make sure the center section (B) is facing the correct way. Double check by making sure you can install the 9/16s bolts (H) into their mounting location.



- 3.
4. All the above brackets will be used to assemble the cross member except for the outside mounting plates (F). These are used as reinforcement spacers to properly clamp the cross member back into the oem location.
5. Once you have assembled the cross member it should look like this.

Installation Manual
Long Arm Upgrade Kit Instructions
2007-2011 Jeep Wrangler and Wrangler Unlimited
Last Revision No.: 8/31/11
PN – 4808100/2108100/1908100



- 6.
7. You are almost ready to install this cross member into your Jeep JK.
8. This cross member has been designed as a bolt in and can be used without welding. For our customers who are more abusive with their driving style we recommend welding in this cross member for maximum strength. The outside flanges will almost touch the bottom of the frame. If you choose to weld in the cross member, this is the time to prep the frame and the cross member. Because this is a 3 piece cross member, if you need to service the transmission in the future the center section can still be removed.
9. Install cross member into your Jeep JK and make sure it is centered left to right. Reinstall the oem transmission bolts.
10. Reinstall the oem cross member bolts using the outside spacer plates (F) on each side to clamp the cross member into the factory bracket.
11. If you choose to weld in this cross member for added strength, this would be the time to weld it in.
12. Now you are ready to install your new long arms. Check the wheels and remove only the driver side arms.
13. Cut off the lower oem frame mounts.



- 14.
15. Measure and make sure both lower arms are the same length. We recommend 36.75 for our 3.5" lift, and 37" for our 4.5" kit.
16. Install the Johnny joint side into the cross member first. This is a tight fit because of the pocket design, but you can fit the 9/16s (I) washer on both sides, and the 9/16s (H) bolt. Install everything loose at the beginning, and then tighten all suspension bolts at the end.
17. Install 1 upper arm to any length at this time. This will simply hold the pinion to you can proceed to the passenger side. Final adjustments will be made once all arms are installed and vehicle is at ride height.
18. Remove passenger side arms, install passenger side long arm.
19. Set vehicle at ride height, and set your caster angle to about 4.5 degrees. On our 4.5" lifted JK our upper arms are approximately 18.75 inches long. Upper arms do NOT have to be the same length.
20. Reattach the oem gas tank skid plate using new 3/8" (K) bolts with the 3/8" (M) washers.
21. Reinstall the rear oem skid plates using new 3/8" (K) bolts with the 3/8" (M) washers.
22. Oem front skid plate will not work with the long arms or a lifted JK due to clearance issues with the driveshaft and arms.
23. Tighten all suspension bolts and any other bolts you may have removed for this installation.

We hope your installation went smoothly and please let us know if you have any suggestions, comments or questions.

Installation Manual

Long Arm Upgrade Kit Instructions

2007-2011 Jeep Wrangler and Wrangler Unlimited

Last Revision No.: 8/31/11

PN – 4808100/2108100/1908100

Damage or Missing Parts Policy: If you receive a product that is damaged or missing parts you must contact us within 14 days to arrange replacement. You may be required to submit photos of damaged parts before new parts are sent. Damage parts may be requested to be returned for inspection.

Return Policy: You have 30 days to return a product in its original packaging. Parts cannot have been installed, painted and/or modified in any way. You must contact us to obtain a RGA # (Return Goods Authorization) before shipping your product back. All returns are subject to a 15% restocking fee. Your return must have the return authorization number clearly marked on the outside of the package and must be shipped prepaid. Packages shipped COD will be refused. Returns are subject to inspection and may be refused if they are damaged or used. You are responsible for proper shipping to ensure product is not damaged or lost. We recommend insuring your product for the full amount in the case it is damaged or lost during return shipment.

Warranty Policy: Clayton Off Road Mfg. comes with our abuse proof limited lifetime warranty against bending or breaking our control arms only. This covers the original purchaser of our suspension lift. This warranty cannot be transferred to a secondary purchaser and is void if the control arm is modified in any form or not used in its proper application. Original purchaser must obtain a RGA # and is responsible for shipping the product back and agrees to return shipment charges. This warranty does not cover worn bushings, missing snap rings, or any kind of rust damage to the threads or inserts or actual arm.

What is not covered:

Clayton Off Road Mfg. components may have minor finish damage to powder coated or plated surfaces, which may occur during shipping and is not covered under warranty. Johnny Joint bushings, washers, snap rings, OEM rubber bushings, hardware, brake lines, shocks, springs, skid plates, trackbars, and any mounting brackets are not covered. These parts are subject to wear and are not considered defective when worn. They are warranted for 90 days from the date of purchase for defects in workmanship only. Products or components which have been subjected to abuse, accident, alteration, modification, improper installation, tampering, negligence, misuse, or products installed on a vehicle used in sanctioned racing events. A race is defined as any contest between two or more vehicles, or any contest of one or more vehicles against the clock, whether or not such contest is for a prize.

Clayton Off Road Mfg. is not responsible for any retail parts that may be sold.

Clayton Off Road Mfg. shall not be liable for any loss, damage or injury, whether ordinary, direct, special, incidental or consequential damages, arising from the manufacture, sale, installation, resale, delivery, possession, handling or use of its products.

Clayton Off Road Mfg. is not responsible for typographical errors either in pricing or in content.

Warranties, policies and prices subject to change without notice.

ALL CLAYTON OFF ROAD MFG. PRODUCTS ARE FOR OFF ROAD USE ONLY!