

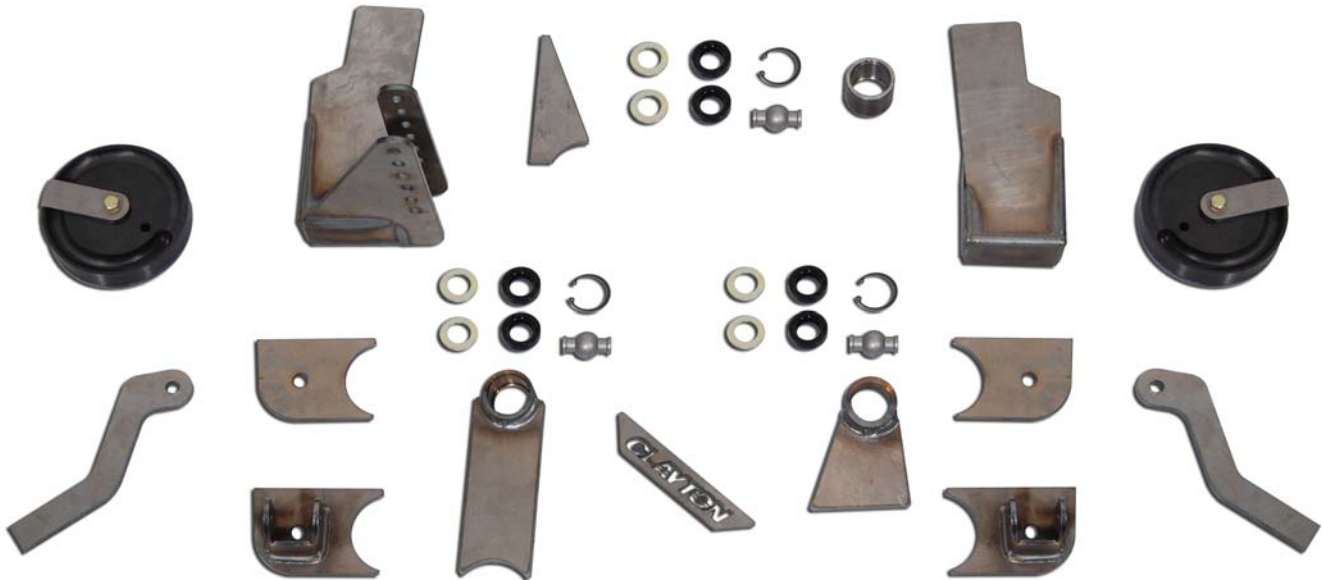
Installation Manual

AB-FABK – High Clearance Front Axle Bracket Kit – Adjustable trackbar model

Last Revision No.: 3/1/08

Thank you for purchasing a Clayton Off Road Mfg Long arm suspension.

Please check to make sure you have all necessary parts before you start your install.



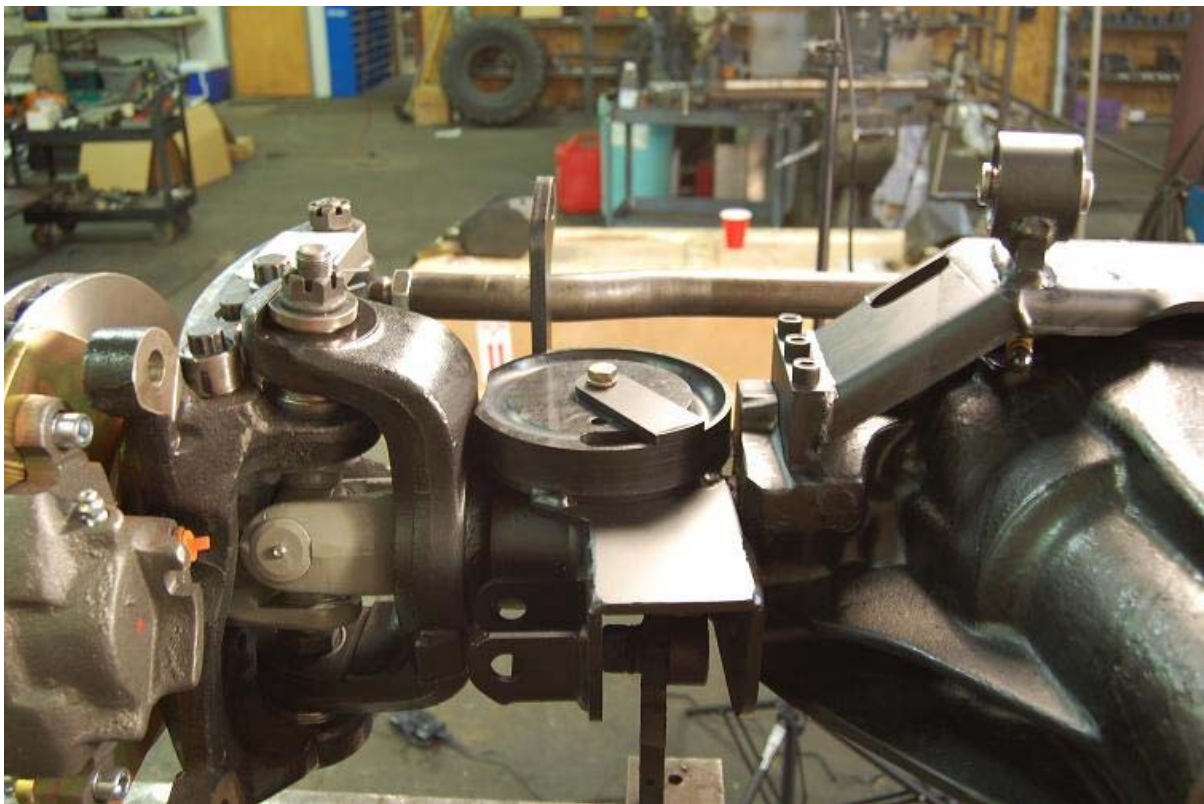
1. This kit is intended to be installed on a driver side drop axle housing. This kit is a high clearance model so none of the brackets hang down below the axle tubes. This does shorten the lower control arm length. In order to keep your axle in the same location you will need to adjust your arms approximately 1 inch shorter.
2. Start with a bare tube housing, clean and ready to weld.
3. Use the provided AutoCAD drawing for proper bracket locations.
4. You should weld on the lower control arms brackets first.
5. Next you will weld on the top brackets, passenger side one includes the adjustable trackbar bracket. Those will weld to the axle tubes and to the lower control arm brackets.
6. Once the passenger side trackbar bracket is welded in, weld in the extra brace on the side. See photo below.
7. Next weld on the passenger side upper control arm bracket. This bracket also uses the “Clayton” gusset. This kit uses 2 inch Currie Johnny joints as upper mounts. This will require you to drill out any oem or aftermarket arm to 7/16s. Use the supplied 7/16s greaseable bolts. ***** WARNING *** Do NOT put the Johnny joints together before you weld . They will melt.**
8. The driver side needs to be modified to fit each housing. Meaning we measure the height of the passenger side and cut the driver side down accordingly to make them the same overall height. Please use proper welding procedure when welding this mount to a cast housing.
9. Weld on the round plates that hold the polyethylene spring buckets. These may need to be trimming on D60 housings do to space.
10. We recommend welding on the sway bar tabs after you check for steering clearance.

Installation Manual

AB-FABK – High Clearance Front Axle Bracket Kit – Adjustable trackbar model

Last Revision No.: 3/1/08

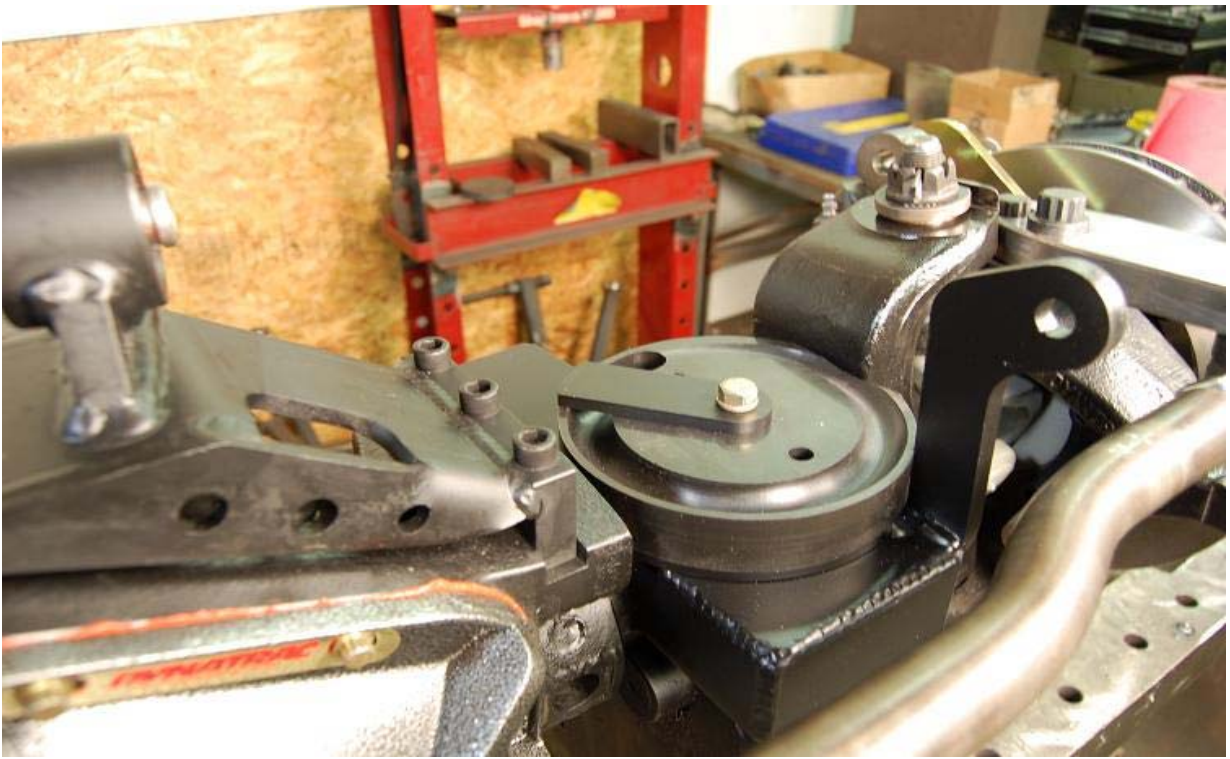
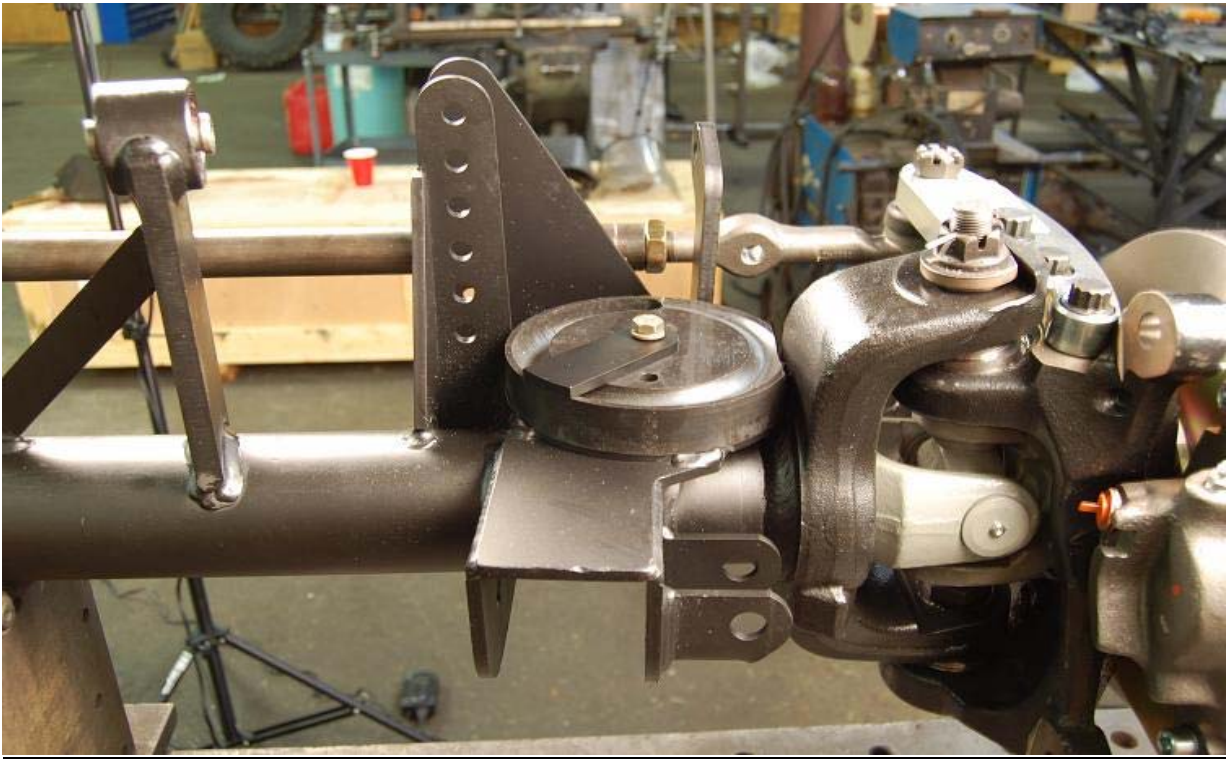
11. The kit comes with 1 extra Johnny Joint or you can order our custom heavy duty trackbar. Once the axle is installed take a measurement and cut and weld this joint to your current trackbar. If you purchased our trackbar take a measurement, and cut the DOM tubing and press in the included insert. Weld insert, let cool, paint, and thread in 2.5 Currie Johnny Joint.



Installation Manual

AB-FABK – High Clearance Front Axle Bracket Kit – Adjustable trackbar model

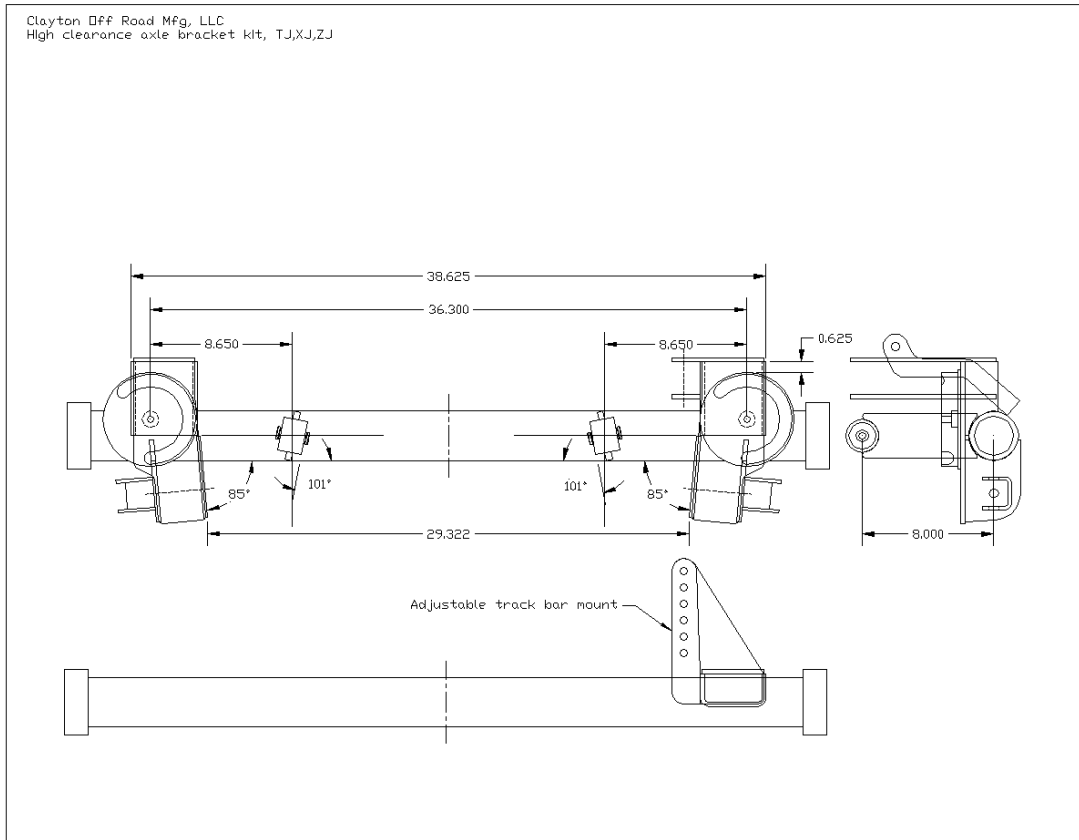
Last Revision No.: 3/1/08



Installation Manual

AB-FABK – High Clearance Front Axle Bracket Kit – Adjustable trackbar model

Last Revision No.: 3/1/08



Clayton Off Road Mfg. – 1261 Meriden Road – Waterbury – CT – 06705 – (203) 757-0339 sales@claytonoffroad.com

Damage or Missing Parts Policy: If you receive a product that is damaged or missing parts you must contact us within 14 days to arrange replacement. You may be required to submit photos of damaged parts before new parts are sent. Damage parts may be requested to be returned for inspection.

Return Policy: You have 30 days to return a product in its original packaging. Parts cannot have been installed, painted and/or modified in any way. You must contact us to obtain a RGA # (Return Goods Authorization) before shipping your product back. All returns are subject to a 15% restocking fee. Your return must have the return authorization number clearly marked on the outside of the package and must be shipped prepaid. Packages shipped COD will be refused. Returns are subject to inspection and may be refused if they are damaged or used. You are responsible for proper shipping to ensure product is not damaged or lost. We recommend insuring your product for the full amount in the case it is damaged or lost during return shipment.

Warranty Policy: Clayton Off Road Mfg. comes with our abuse proof limited lifetime warranty against bending or breaking our control arms only. This covers the original purchaser of our suspension lift. This warranty cannot be transferred to a secondary purchaser and is void if the control arm is modified in any form or not used in its proper application. Original purchaser must obtain a RGA # and is responsible for shipping the product back and agrees to return shipment charges. This warranty does not cover worn bushings, missing snap rings, or any kind of rust damage to the threads or inserts or actual arm.

What is not covered:

Clayton Off Road Mfg. components may have minor finish damage to powder coated or plated surfaces, which may occur during shipping and is not covered under warranty. Johnny Joint bushings, washers, snap rings, OEM rubber bushings, hardware, brake lines, shocks, springs, skid plates, trackbars, and any mounting brackets are not covered. These parts are subject to wear and are not considered defective when worn. They are warranted for 90 days from the date of purchase for defects in workmanship only. Products or components which have been subjected to abuse, accident, alteration, modification, improper installation, tampering, negligence, misuse, or products installed on a vehicle used in sanctioned racing events. A race is defined as any contest between two or more vehicles, or any contest of one or more vehicles against the clock, whether or not such contest is for a prize.

Clayton Off Road Mfg. is not responsible for any retail parts that may be sold.

Clayton Off Road Mfg. shall not be liable for any loss, damage or injury, whether ordinary, direct, special, incidental or consequential damages, arising from the manufacture, sale, installation, resale, delivery, possession, handling or use of its products.

Clayton Off Road Mfg. is not responsible for typographical errors either in pricing or in content.

Warranties, policies and prices subject to change without notice.