

Installation Manual

SFK-JK – Steering Flip Kit – Jeep Wrangler 2007+

Last Revision No.: 9/1/09

Thank you for purchasing a Clayton Off Road Mfg product.

Please check to make sure you have all necessary parts before you start your install.



Parts List :

- OEM style drag link
- CNC machined insert
- Metric locknut
- ¼ trackbar bracket
- 9/16 grade 8 bolt with spacer
- (3) 3/8-16 grade 8 bolt, lock washer and nut

Tools Required:

- Welder
- Grinder
- ½ electric drill with 7/8 drill bit
- standard hand tools to remove and install bolts

Note – This high steer kit was designed to correct steering geometry with a lifted Jeep Wrangler JK. The kit was designed to be used with the Clayton Off Road 3.5 and 4.5 inch lift kits and **welding is required to install this kit**. The kit also raises the trackbar and will add clearance between the trackbar and differential cover. It also strengthens the trackbar bracket by bolting our ¼ bracket and welding it to the front axle.

Note - This new ¼ trackbar bracket is designed to be bolted into the stock location, then welded for superior strength. It also incorporates a new relocated lower swaybar mount. This bracket was designed to be installed with the three (3) supplied 3/8 bolts, and one (1) 9/16 bolt with spacer and allows for **temporary driving without welding**. Basically you can drill and install this kit in your driveway, then drive to a certified welder, and have him weld both sides of the bracket.

Installation Manual

SFK-JK – Steering Flip Kit – Jeep Wrangler 2007+

Last Revision No.: 9/1/09

WARNING: Suspension systems and their components are designed to enhance your vehicles offroad performance. This may cause your vehicle to handle differently then it did from the factory. These systems and any components should be installed by certified technicians. Attempts to install these products without proper knowledge can lead to poor performance, or possible failure, which may jeopardize the safety of the vehicle and its passengers. Take extra care when operating a modified vehicle and thoroughly inspect your vehicle before and after every offroad use.

Trackbar Bracket Installation :

1. Remove front adjustable trackbar. Do not loose or damage these bolts as they will be reused in your new trackbar bracket.
2. You will need to remove the passenger side lower swaybar. The lower tab needs to be cut off, and should be ground down. This OEM bracket will NOT be reused. The new ¼ trackbar bracket incorporates a new swaybar mount.
3. Test fit the bracket, marking where you will need to weld, then remove bracket and grind axle tube clean. The bracket should be welded on both sides of the curved bracket where it meets the axle tube and underneath. **(See Picture # 1)**
 - a. *This kit was designed to be used with our JK 3.5 and 4.5 lift kit. If you are using another manufacturers lift kit it should work with a 3-5 inch lift. An adjustable trackbar will likely be needed. We recommend bolting in the trackbar bracket and checking for any clearance issues before welding in this bracket, and/or drilling out your knuckle.*
4. Once the axle tubes are clean and ready for welding, you can install your new trackbar bracket.
5. DO NOT tighten any bolts until all bolts and trackbar are installed. Start with the inside 3/8 bolt, then the 2 outside ones. Once those are in installed the 9/16 bolt with the spacer inside the mount. There will be a little gap until everything is tightened up.
6. Reinstall adjustable trackbar. Trackbar may need to be readjusted once everything is in.
7. With trackbar installed, tighten all trackbar mounting bolts.
8. Weld both inside and outside of your new trackbar bracket.
9. Install swaybar mount which will be backwards from its original location. Its actual position will stay the same.

Drag Link Installation :

1. Remove front passenger tire too allow easy access to passenger side knuckle.
2. Unbolt steering stabilizer. This will be reinstalled with your factory bolts at the end,
3. Remove OEM drag link. Unbolt at knuckle and remove. Loosen drag link adjuster and unscrew the drag link bar. **Picture # 2** shows the drag link adjuster with the drag link removed. You do NOT need to remove the other end that attaches to the pitman arm.
4. Drill out the passenger side top knuckle to 7/8s. Make sure you drill this hole straight and steady to ensure a tight fit with the new CNC machined tapered insert. We started with a brand new 7/8 drill bit, and used cutting fluid while drilling out the hole.
5. Once the hole is drilled out, clean the hole and insert the gold zinc plated tapered insert. Shown in **Picture # 3**.
6. Install new drag link. Screw in drag link into the drag link adjuster so it is equal to the top section. This will be its shortest length and should be adjusted out to center the steering wheel.
7. Once your draglink is installed, double check to make sure your steering wheel is straight
8. Reinstall your steering stabilizer.
9. Reinstall your swaybar link.
10. Make sure all bolts are tight.

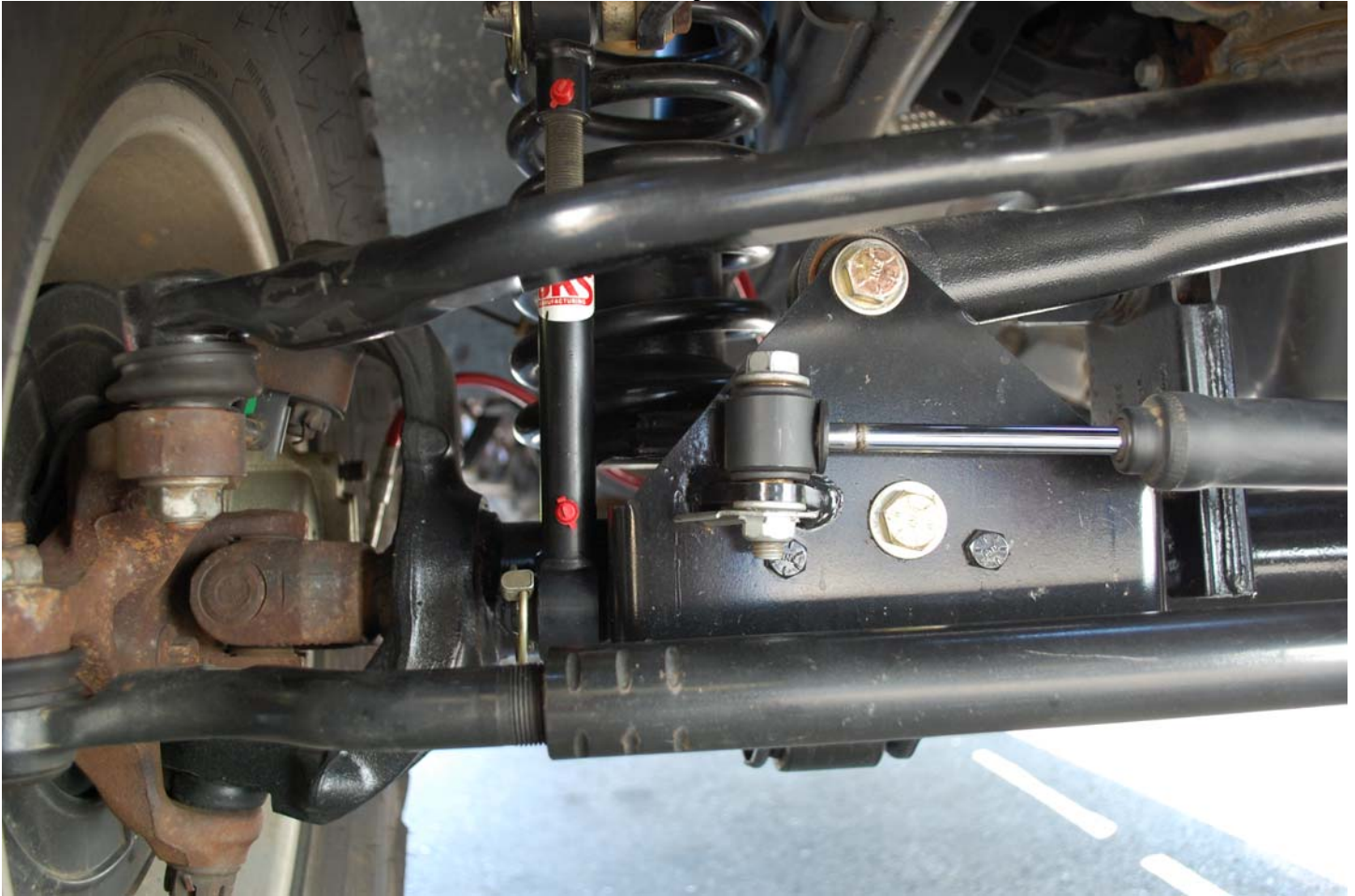
That completes the installation. We hope everything went smoothly, and please let us know if you have any comments or suggestions.

Installation Manual

SFK-JK – Steering Flip Kit – Jeep Wrangler 2007+

Last Revision No.: 9/1/09

Shown below is a completed install.

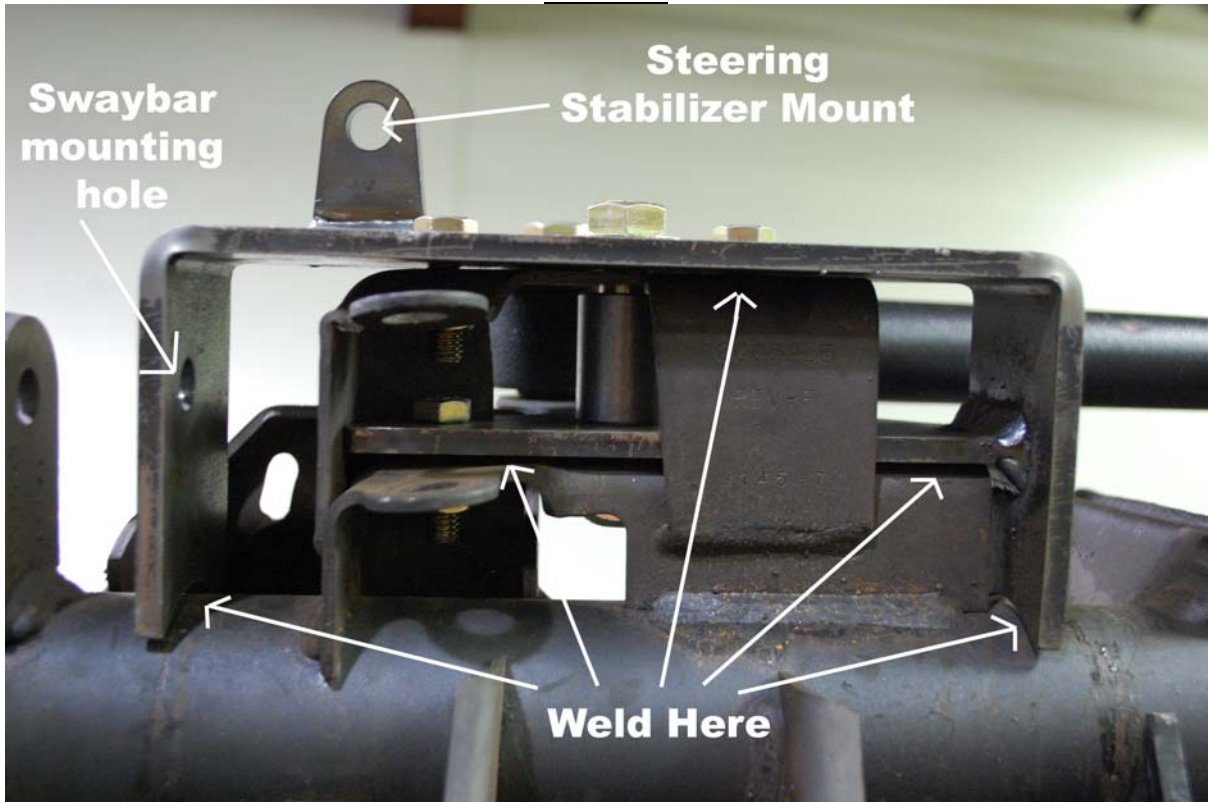


Installation Manual

SFK-JK – Steering Flip Kit – Jeep Wrangler 2007+

Last Revision No.: 9/1/09

Picture # 1



Picture # 2



Installation Manual

SFK-JK – Steering Flip Kit – Jeep Wrangler 2007+

Last Revision No.: 9/1/09

Picture # 3



Clayton Off Road Mfg. – 1261 Meriden Road – Waterbury – CT – 06705 – (203) 757-0339 sales@claytonoffroad.com

Damage or Missing Parts Policy: If you receive a product that is damaged or missing parts you must contact us within 14 days to arrange replacement. You may be required to submit photos of damaged parts before new parts are sent. Damage parts may be requested to be returned for inspection.

Return Policy: You have 30 days to return a product in its original packaging. Parts cannot have been installed, painted and/or modified in any way. You must contact us to obtain a RGA # (Return Goods Authorization) before shipping your product back. All returns are subject to a 15% restocking fee. Your return must have the return authorization number clearly marked on the outside of the package and must be shipped prepaid. Packages shipped COD will be refused. Returns are subject to inspection and may be refused if they are damaged or used. You are responsible for proper shipping to ensure product is not damaged or lost. We recommend insuring your product for the full amount in the case it is damaged or lost during return shipment.

Warranty Policy: Clayton Off Road Mfg. comes with our abuse proof limited lifetime warranty against bending or breaking our control arms only. This covers the original purchaser of our suspension lift. This warranty cannot be transferred to a secondary purchaser and is void if the control arm is modified in any form or not used in its proper application. Original purchaser must obtain a RGA # and is responsible for shipping the product back and agrees to return shipment charges. This warranty does not cover worn bushings, missing snap rings, or any kind of rust damage to the threads or inserts or actual arm.

What is not covered:

Clayton Off Road Mfg. components may have minor finish damage to powder coated or plated surfaces, which may occur during shipping and is not covered under warranty. Johnny Joint bushings, washers, snap rings, OEM rubber bushings, hardware, brake lines, shocks, springs, skid plates, trackbars, and any mounting brackets are not covered. These parts are subject to wear and are not considered defective when worn. They are warranted for 90 days from the date of purchase for defects in workmanship only. Products or components which have been subjected to abuse, accident, alteration, modification, improper installation, tampering, negligence, misuse, or products installed on a vehicle used in sanctioned racing events. A race is defined as any contest between two or more vehicles, or any contest of one or more vehicles against the clock, whether or not such contest is for a prize.

Clayton Off Road Mfg. is not responsible for any retail parts that may be sold.

Clayton Off Road Mfg. shall not be liable for any loss, damage or injury, whether ordinary, direct, special, incidental or consequential damages, arising from the manufacture, sale, installation, resale, delivery, possession, handling or use of its products.

Clayton Off Road Mfg. is not responsible for typographical errors either in pricing or in content.

Warranties, policies and prices subject to change without notice.