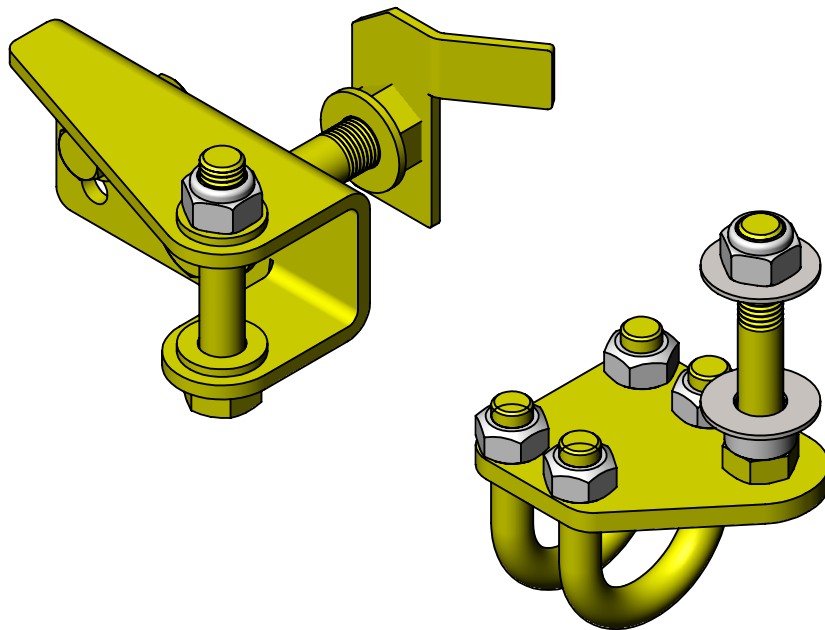


Clayton Off Road
COR-5209011

Jeep Wrangler Steering Stabilizer Relocation Bracket Kit (2007-2018+, JK/JL)



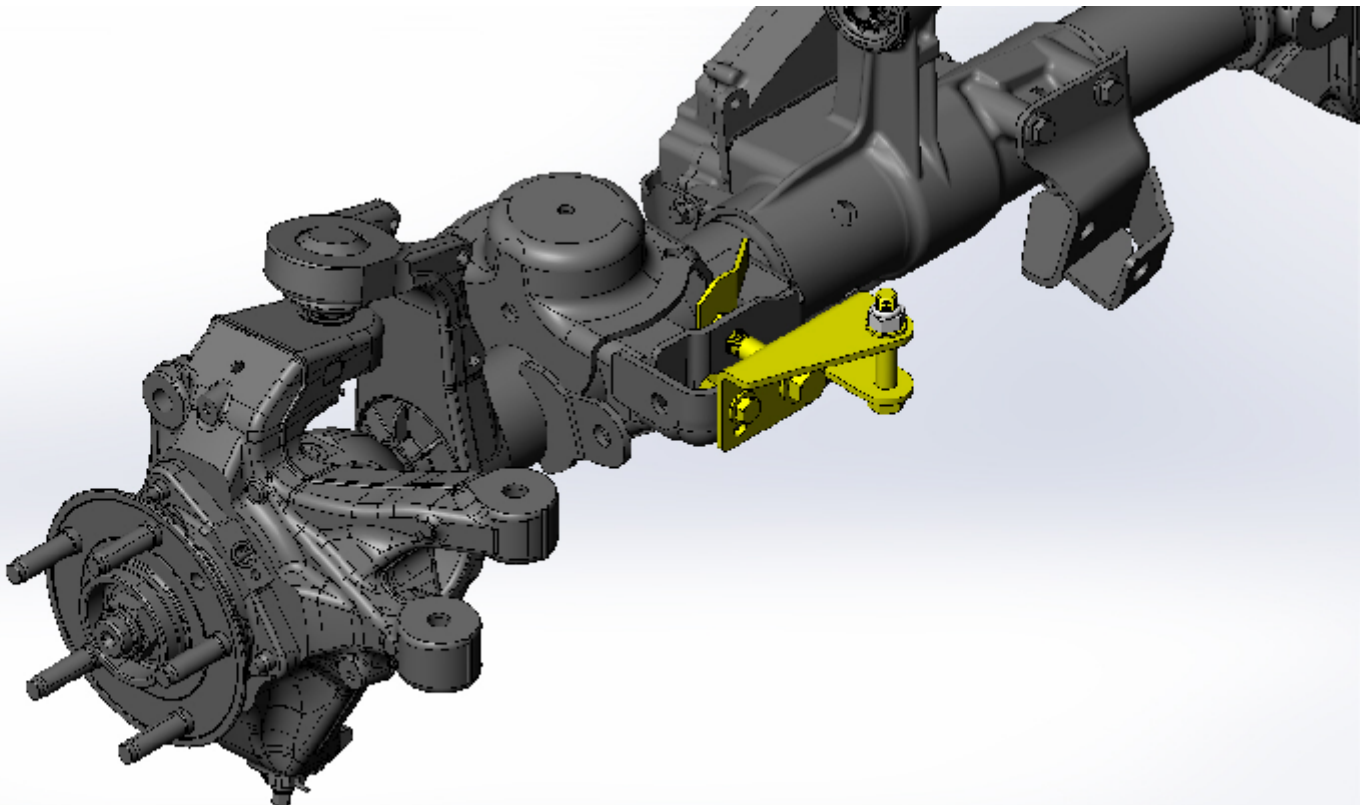
NOTES: This product may require general welding, fabrication and automotive mechanic skills. Welding should only be done by a competent welder. Clayton Off Road implies no guarantees or warranties and is not liable for improper installation. Some grinding and fitment may be required when installing this product. Every vehicle varies slightly and some fabrication may be required.

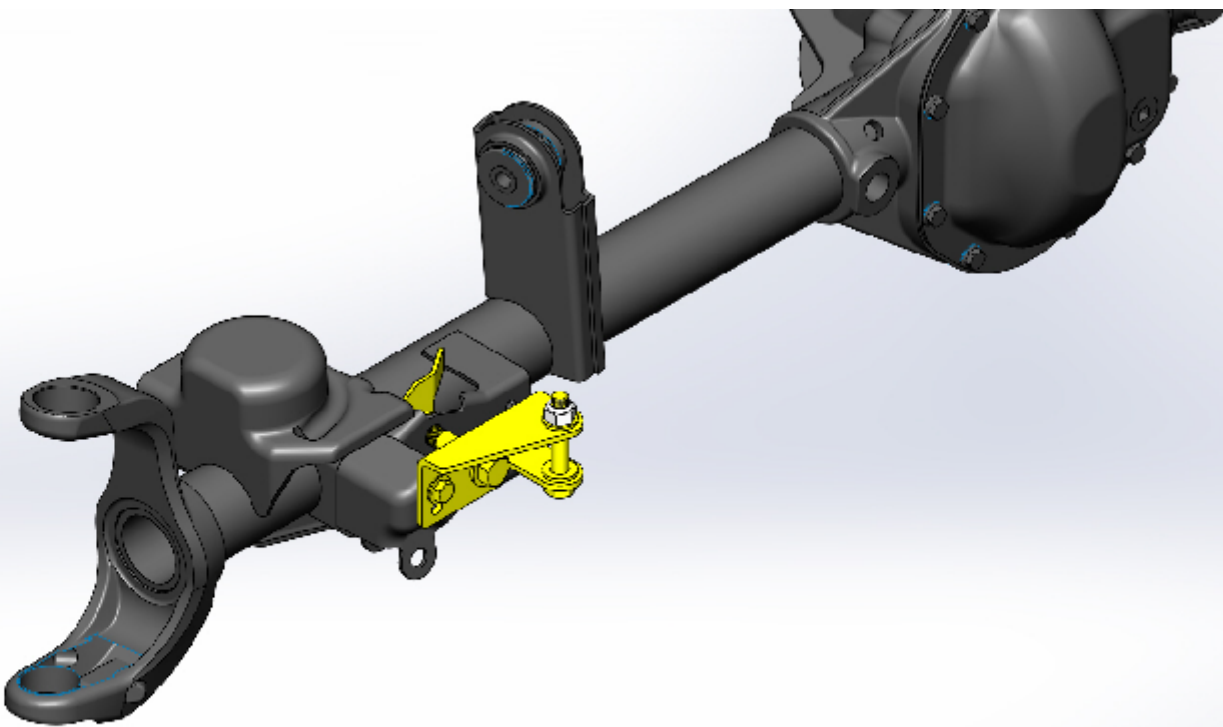
For more information please visit our website.

Refer to pictures below.

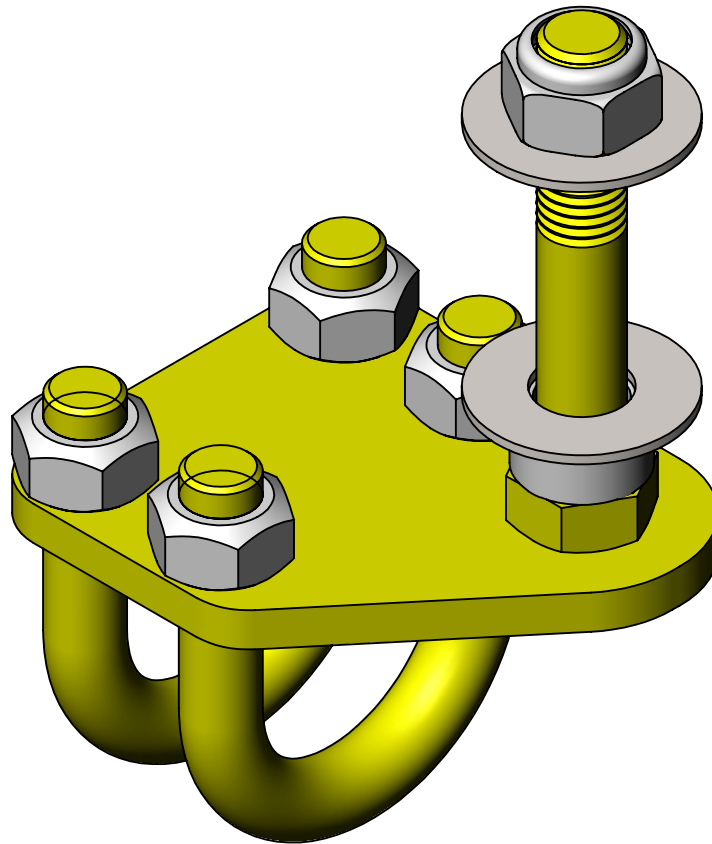
- Step 1: Put front axle on jack stands.
- Step 2: Remove drag link at passenger knuckle.
- Step 3: Remove factory steering stabilizer.
- Step 4: Remove factory steering stabilizer mounts if not being reused.
- Step 5: Install new steering stabilizer mount on axle with 9/16" hardware.
- Step 6: Make sure mount is aligned with track bar mount.
- Step 7: Drill out upper hole on JL model with 3/8" drill bit, use bottom hole on JK model.
- Step 8: Install 3/8" hardware.
- Step 9: Torques 9/16" bolt to 146-171 ft/lbs and 3/8" bolt to 37 to 44 ft-lbs.
- Step 10: Install part number COR-5200940 tie rod steering stabilizer mount.
- Step 11: Use 12mm flat washer on JK steering stabilizer as a spacer on bushing.
- Step 12: Install steering stabilizer.
- Step 13: Make sure tires are straight.
- Step 14: Slide tie rod link mount to center stabilizer stroke.
- Step 15: Rotate tie rod link mount so that it does not interfere when turning.
- Step 16: Tighten bolts on steering stabilizer and tie rod link mount.
- Step 17: Turn wheels lock to lock checking clearances.
- Step 18: Remove jack stands.

JL Model





**Clayton Off Road
COR-5200940
Tie Rod Steering Stabilizer Mount**



NOTES: This product may require general welding, fabrication and automotive mechanic skills. Welding should only be done by a competent welder. Clayton Off Road implies no guarantees or warranties and is not liable for improper installation. Some grinding and fitment may be required when installing this product. Every vehicle varies slightly and some fabrication may be required.

For more information please visit our website.

Step 1: Determine mounting location and orientation.

Step 2: Install u-bolts and top lock nuts.

Step 3: Install steering stabilizer.

Step 4: Move mount so that stabilizer is in mid point of travel.

Step 5: Snug up u-bolts so stabilizer mount does not move.

Step 6: Turn wheels lock to lock checking clearances and travel.

Step 7: Torque u-bolts and stabilizer mount stud to 40 to 50 ft-lbs .