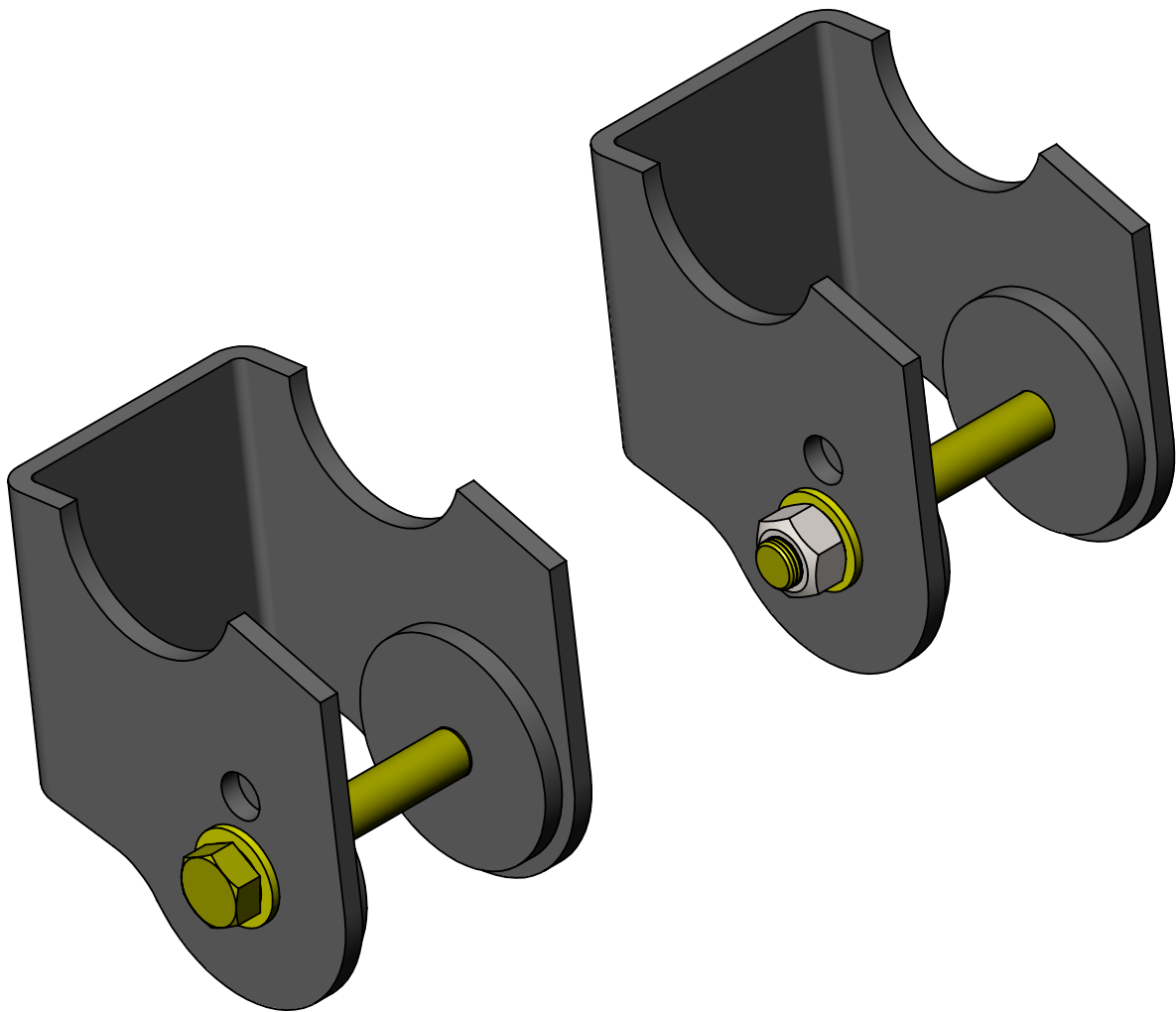


CLAYTON OFF ROAD
COR-1106030
JEEP GRAND CHEROKEE HD FRONT LOWER CONTROL ARM BRACKETS (1999-2004 WJ)



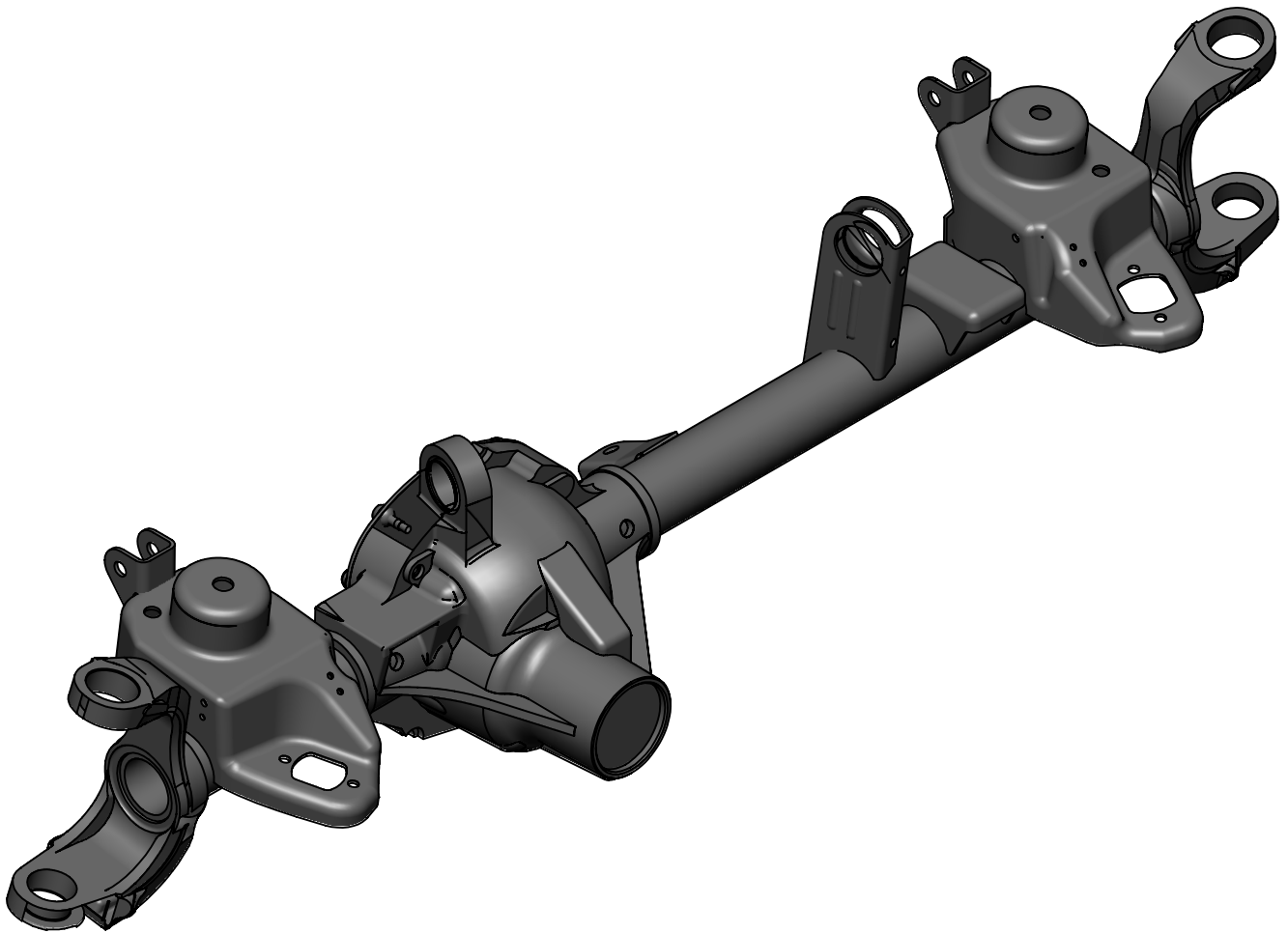
NOTES: This product may require general welding, fabrication and automotive mechanic skills. Welding should only be done by a competent welder. Clayton Off Road implies no guarantees or warranties and is not liable for improper installation. Some grinding and fitment may be required when installing this product. Every vehicle varies slightly and some fabrication may be required. For more information please visit our website.

Refer to picture below.

Step 1: Remove axle from vehicle. (optional)

Step 2: Remove factory lower control arm mounts.

Step 3: Grind axle tubes smooth and clean axle tubes for welding.



Refer to picture below and 3 drawing views for measurements.

Step 1: If using control arm spacers which are needed with our long arm kit bolt control arm in the bracket with the spacers and tack weld spacers.

Step 2: Remove control arm from bracket.

Step 3: Weld spacers in. (Three one inch welds is enough)

Step 4: Position new lower control arm mounts on axle.

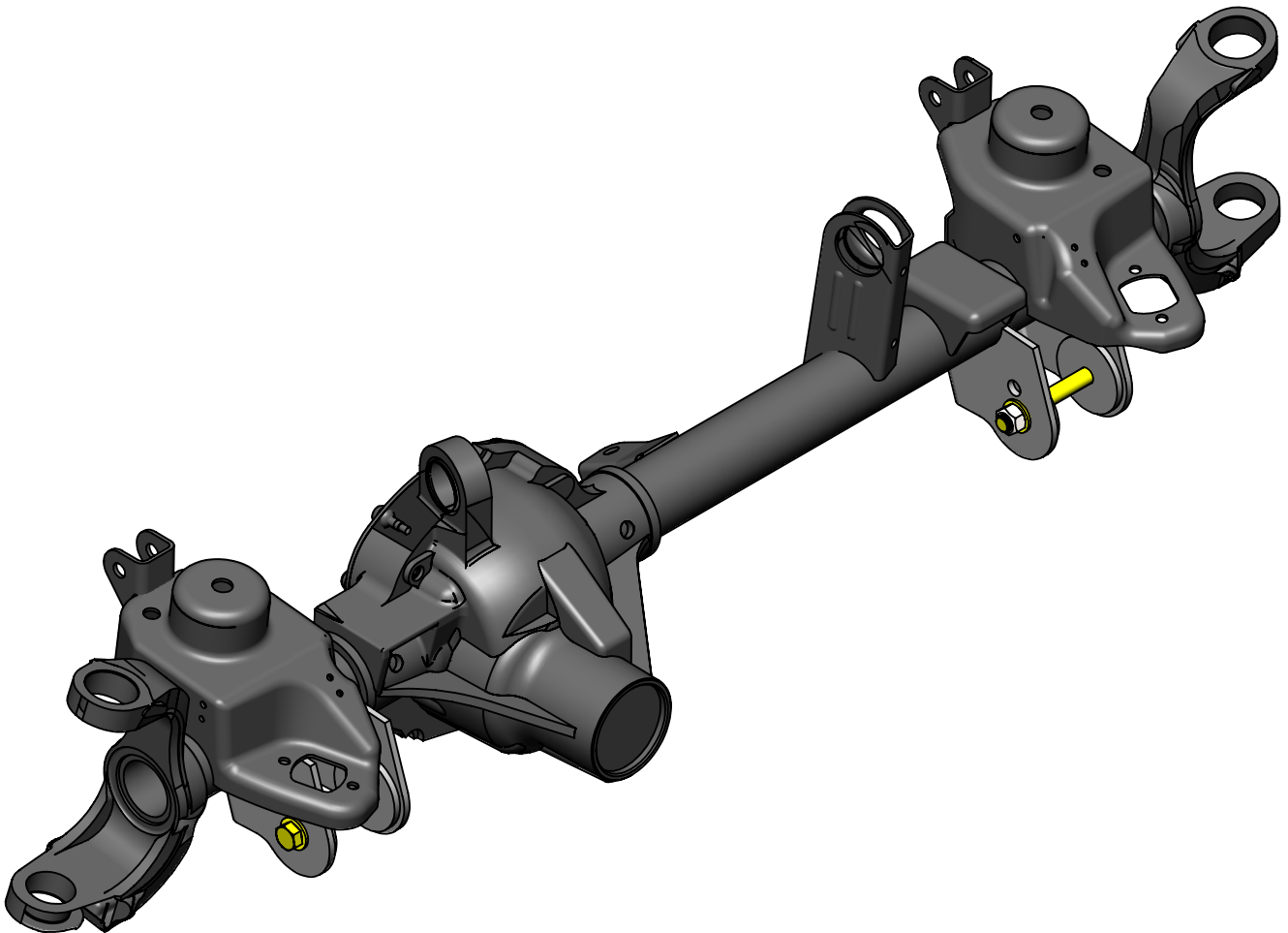
Step 5: Check to make sure control arm fits into mount.

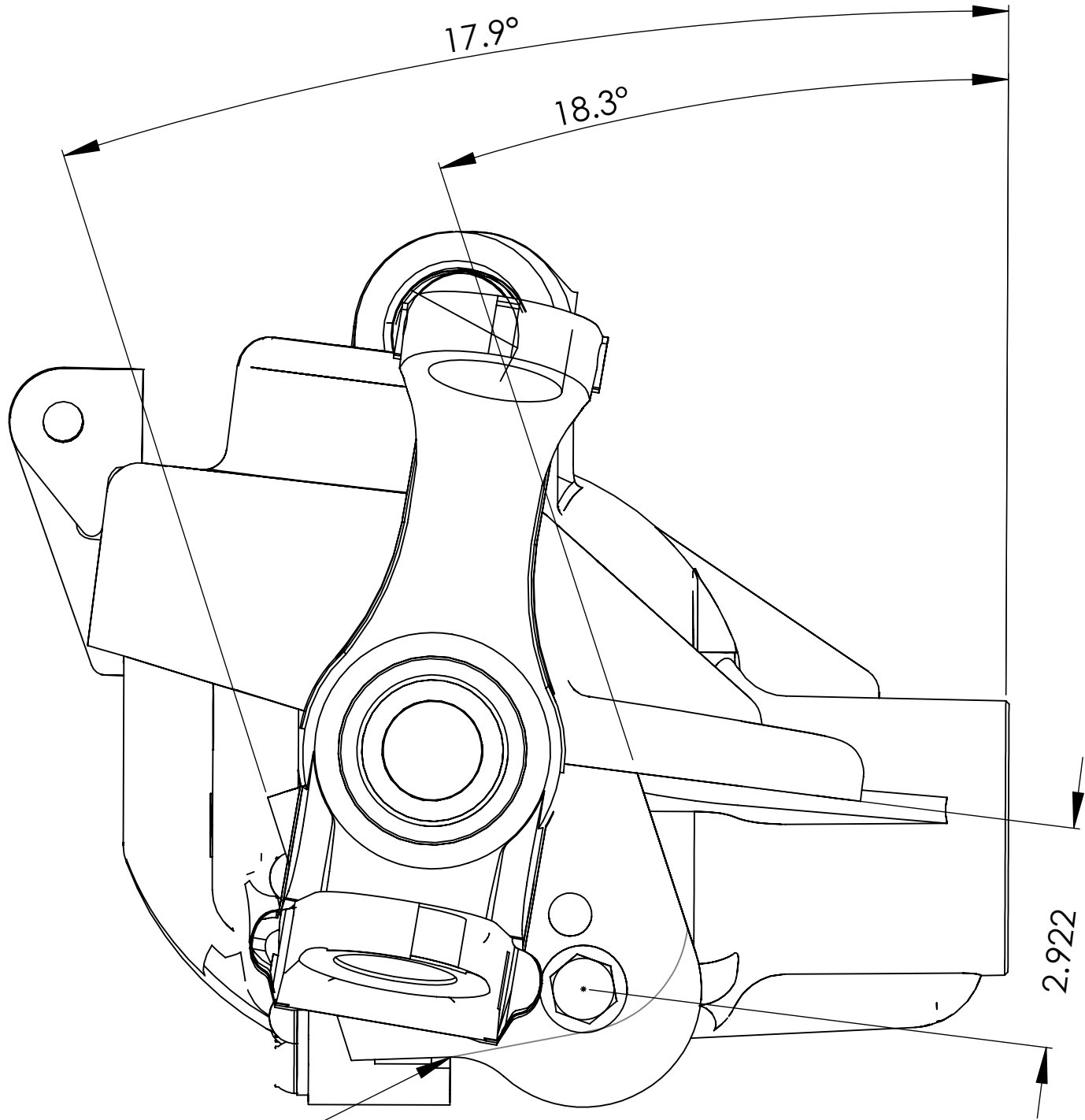
Step 6: Tack weld in place.

Step 7: Weld both sides of the mount inside and out.

Step 8: Paint axle.

Step 9: Install axle in vehicle. (If removed for install)





Option cut off mark for upper hole use.

This is an optional hole which moves the lower control arm mount up 1". Using this hole may cause changes in handling and add more stress to the upper control arms.

