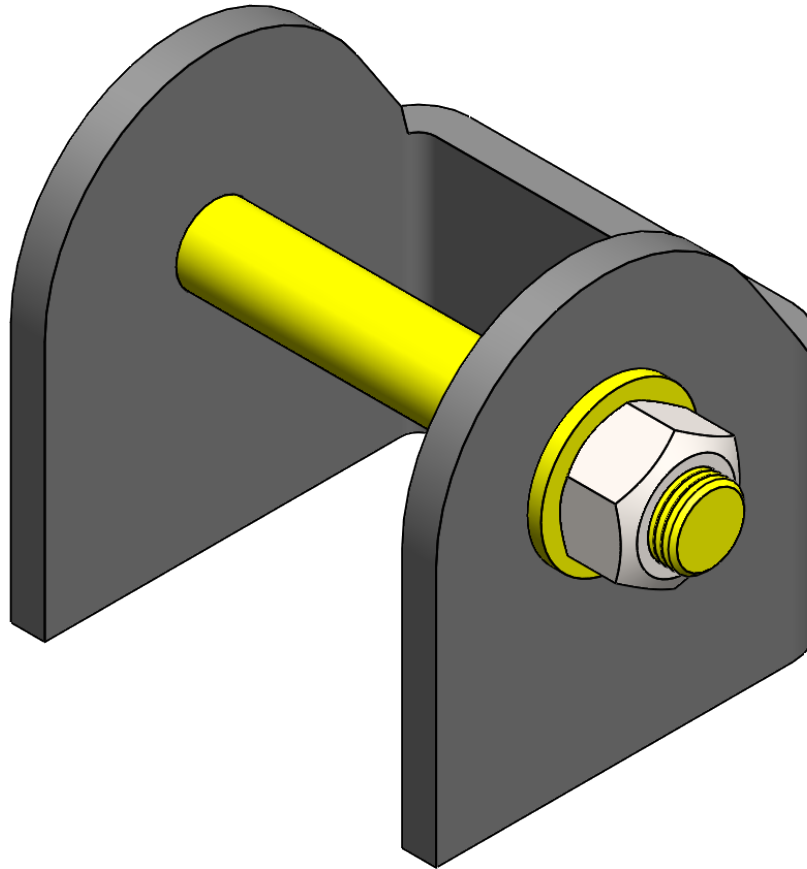


CLAYTON OFF ROAD
COR-1130110
JEEP3-LINK AXLE MOUNT (1984-2017, JK/TJ/LJ/XJ/ZJ)



NOTES: This product may require general welding, fabrication and automotive mechanic skills. Welding should only be done by a competent welder. Clayton Off Road implies no guarantees or warranties and is not liable for improper installation. Some grinding and fitment may be required when installing this product. Every vehicle varies slightly and some fabrication may be required. For more information please visit our website.

Step 1: Remove axle from vehicle. (optional)

Step 2: Clean differential housing to weld mount directly to housing.

Step 3: Trim mount to match housing.

Step 4: Locate mount.

Step 5: Tack weld mount into place.

Step 6: Preheat housing and bracket to about 400 to 500 degrees if using a cast housing.

Step 7: Weld completely around the inside and outside of bracket.

Step 8: If you do not want to weld to the differential housing you need to create a surface strong enough to take torque created by your drive train by means of either a bridge or truss over the differential housing.

Step 9: Once you have completed step 8 go to step 5.

Step 10: Paint axle.

Step 11: Install axle.

