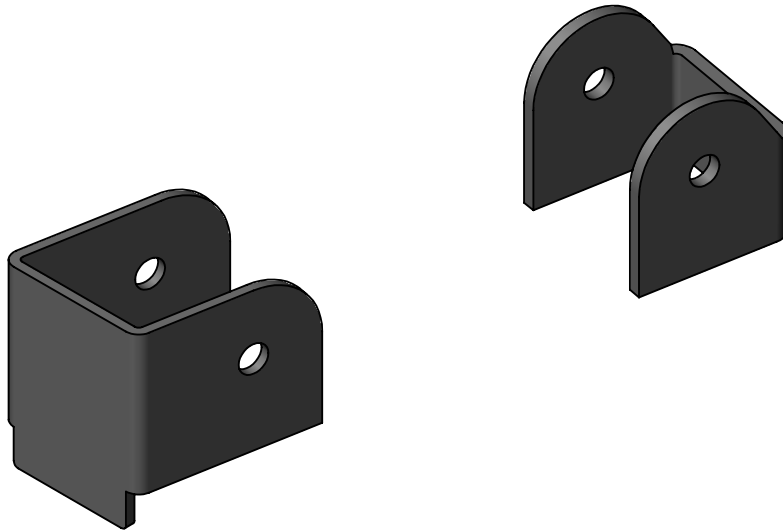


**CLAYTON OFF ROAD**

**COR-1130300**

**JEEP CHEROKEE & GRAND CHEROKEE 3-LINK MOUNT KIT (1984-2001 XJ,ZJ)**



NOTES: This product may require general welding, fabrication and automotive mechanic skills. Welding should only be done by a competent welder. Clayton Off Road implies no guarantees or warranties and is not liable for improper installation. Some grinding and fitment may be required when installing this product. Every vehicle varies slightly and some fabrication may be required. For more information please visit our website.

# 2101100 Jeep Cherokee Front 3 Piece Cross Member (1984-2001 XJ)

Step 1: Locate 3-link cross member bracket as shown below.

Step 2: Check fit of control arm in bracket.

Step 3: Tack bracket in place.

Step 4: Weld bracket in place on 3 sides.

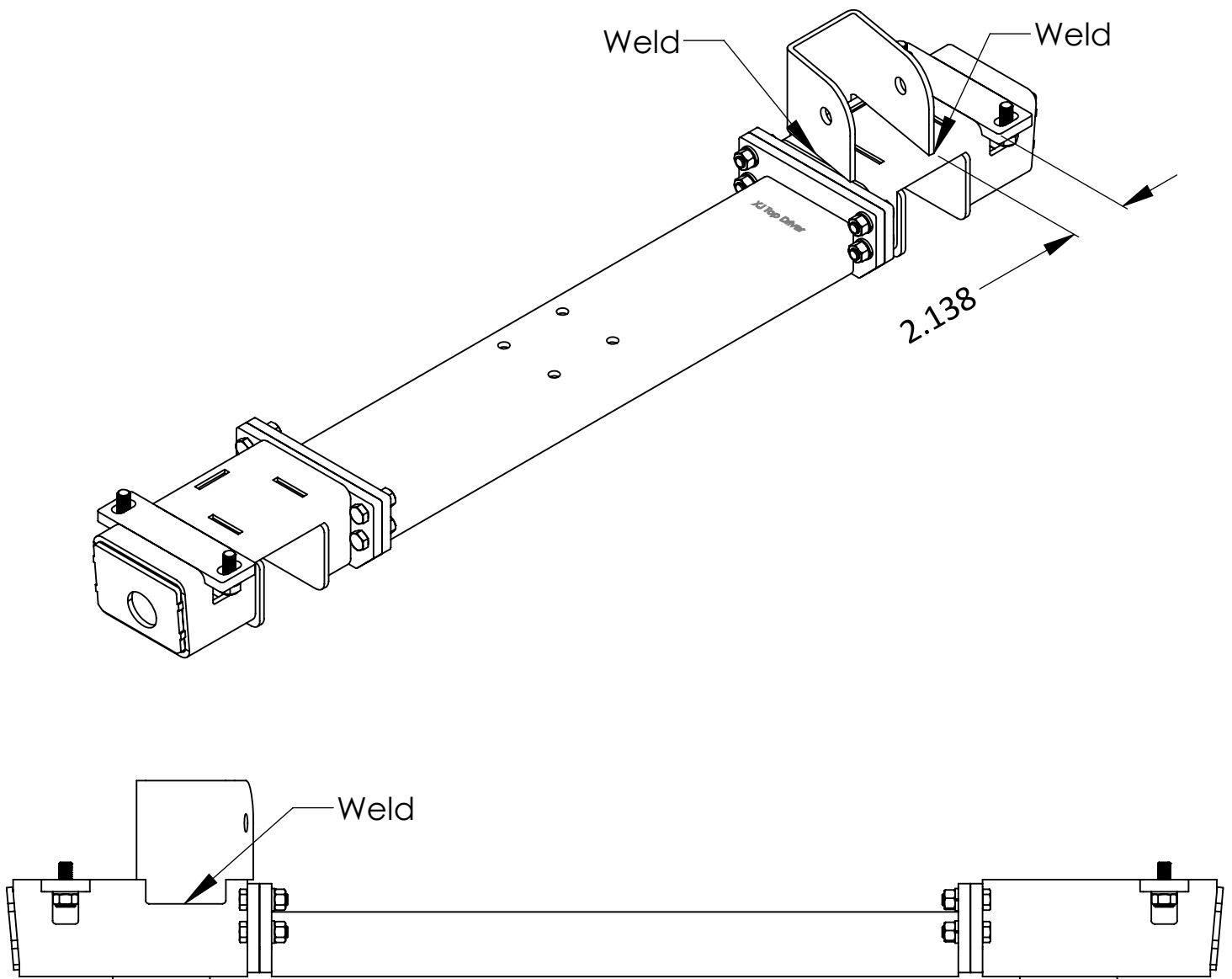
Step 5: Install cross member refer to instructions for part number 2101100.

Step 6: Locate 3-link axle bracket on optional part numbers 1100106 bridge ,  
1130100, 1130101 trusses or axle housing.

Step 7: Check fit of control arm in bracket.

Step 8: Tack bracket in place.

Step 9: Weld bracket in place on 3 sides.



2104310 Jeep Grand Cherokee Front 3 Piece  
Cross Member (1993-1996 ZJ)

Step 1: Locate 3-link cross member bracket as shown below.

Step 2: Check fit of control arm in bracket.

Step 3: Tack bracket in place.

Step 4: Weld bracket in place on 3 sides.

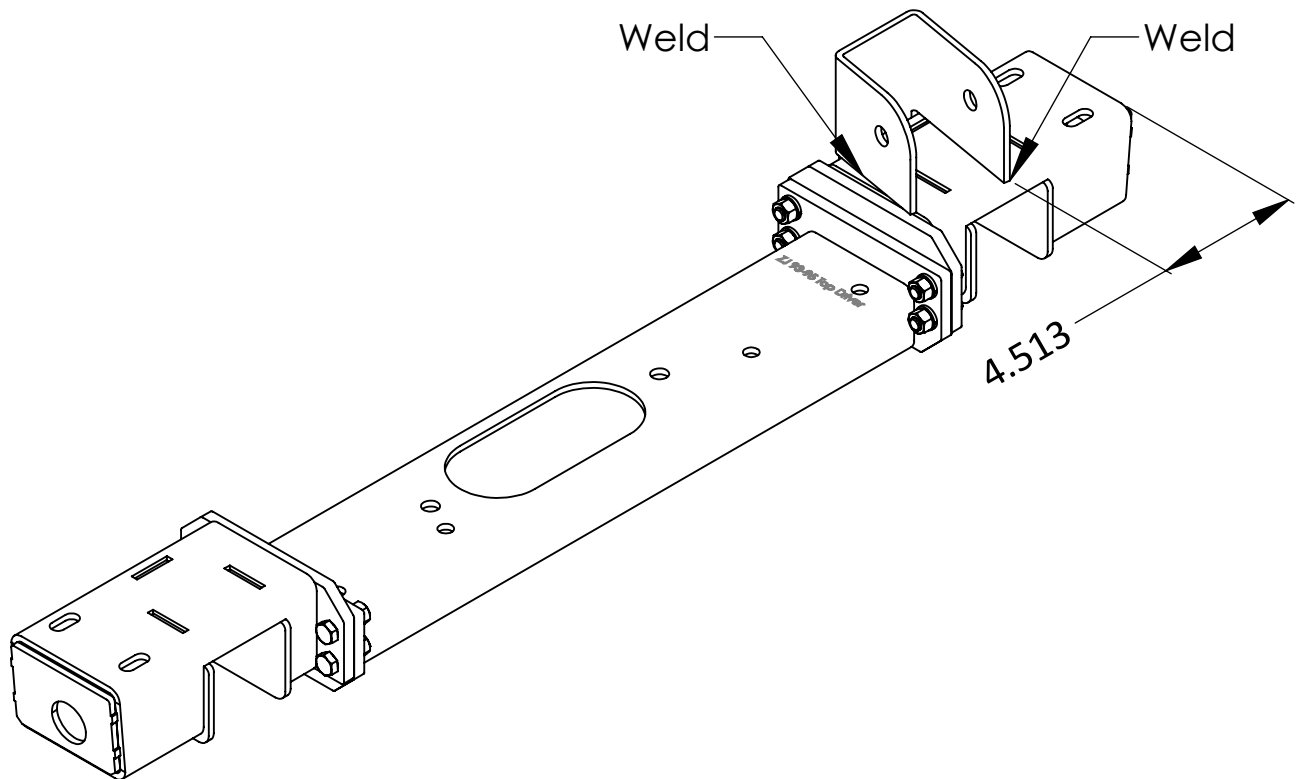
Step 5: Install cross member refer to instructions for part number 2104310.

Step 6: Locate 3-link axle bracket on optional part numbers 1100106 bridge ,  
1130100, 1130101 trusses or axle housing.

Step 7: Check fit of control arm in bracket.

Step 8: Tack bracket in place.

Step 9: Weld bracket in place on 3 sides.



2104610 Jeep Grand Cherokee Front 3 Piece  
Cross Member (1996-1998 ZJ)

Step 1: Locate 3-link cross member bracket as shown below.

Step 2: Check fit of control arm in bracket.

Step 3: Tack bracket in place.

Step 4: Weld bracket in place on 3 sides.

Step 5: Install cross member refer to instructions for part number 2104610.

Step 6: Locate 3-link axle bracket on optional part numbers 1100106 bridge ,  
1130100, 1130101 trusses or axle housing.

Step 7: Check fit of control arm in bracket.

Step 8: Tack bracket in place.

Step 9: Weld bracket in place on 3 sides.

