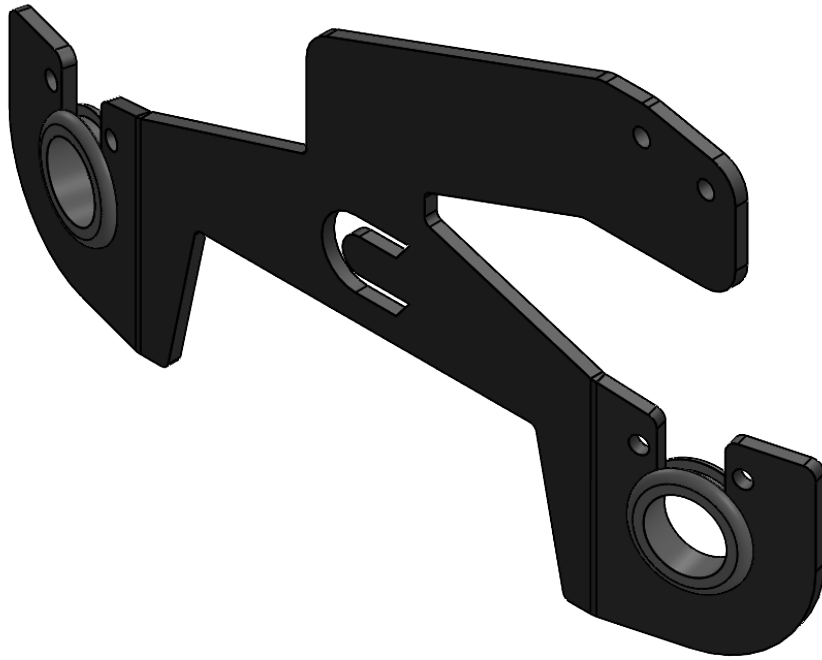


**CLAYTON OFF ROAD
COR-309502
JEEP WRANGLR EMERGENCY BRAKE CABLE EXTENSIONS (2018+, JL)**



NOTES: This product may require general welding, fabrication and automotive mechanic skills. Welding should only be done by a competent welder. Clayton Off Road implies no guarantees or warranties and is not liable for improper installation. Some grinding and fitment may be required when installing this product. Every vehicle varies slightly and some fabrication may be required. For more information please visit our website.

COR-1309502 PARTS LIST

1309502 Emergency Brake Cable Extension (2018+, JL/JT)			
QTY	Part Number	Description	Class/Grade
1	1309502	JL E-Brake Cable Bracket	N/A
2	RG32111471	Rubber Grommet 1" ID for 3/16" Groove Width - Fits 1-1/4" Holes	N/A

PRODUCT NOTES

- This kit includes hardware for installation of the COR Emergency Brake Cable Extensions for the Jeep Wrangler JL model, 2018+.
- This bracket is designed to keep your emergency brake in working condition when upgrading your vehicle with a lift kit of 2" or higher. This kit also works well with long travel suspension setups.
- This bracket reroutes the emergency brake cables underneath the rear crossmember, as opposed to routing the cables above the cross member, like the stock setup. This reroute improves clearance and accomodates larger lift kits.
- This bracket is **NOT** compatible with Wrangler 4XE models

INSTRUCTIONS – COR 1309502

1. Remove the emergency brake cables from their eyelet locations. Do this for both the left and right rear sides. See Figure 1.



Figure 1: Left rear emergency brake cable removed from eyelet

2. Remove the emergency brake cable housing from its bracket on the axle. Use a 13mm socket to compress all the spring clips at once and slide the housing out and away from its bracket.



Figure 2: Emergency brake cable housing in axle bracket and then removed

3. Pull the emergency brake cable housings out from above the rear cross member and reroute them behind and under. Figure 3 shows the cable housings pulled out from above the cross member. Let them hang for now.



Figure 3: Emergency brake cable housings pulled out from above cross member and rerouted below the fuel line

4. Remove the two 10mm nuts retaining the rear differential wiring harness. They can be found on the rear cross member just above the differential.



Figure 4: 10mm nuts to be removed to mount bracket

5. Install the Clayton Off Road Emergency Brake Cable Extension Bracket on the bolts where the 10mm nuts were just removed. As seen in Figure 5, if you are facing the mounting location, the bends of the bracket will be facing away from you. Reinstall the 10mm nuts.



Figure 5: Installed bracket with proper bend direction

6. Install the included rubber grommets around the hanging emergency brake cable housings. Take care in moving these grommets up and over zip ties.

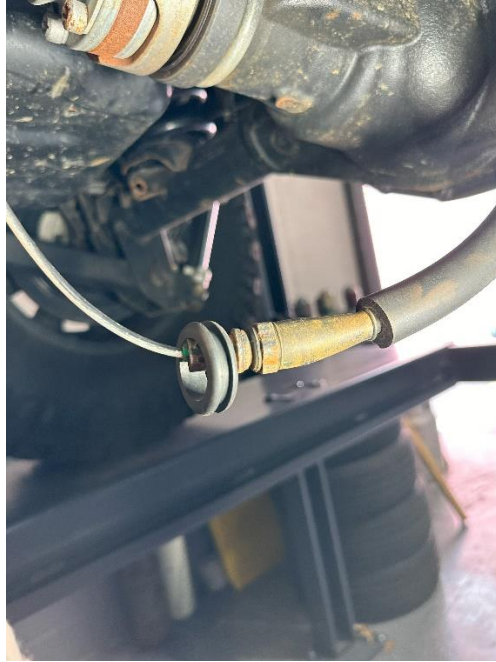


Figure 6: Rubber grommet installation

7. Once both grommets are installed and in an optimal position, insert the cable housing into the bracket. This fit will be tight, so make sure the grommet seats properly in the bracket. See Figure 7.
 - a. **OPTIONAL:** Zip ties can be used on both sides to permanently fix the cable housings into place.



Figure 7: Cable housings installed

- Return the emergency brake cable housings to their respective axle mounts. Ensure that the spring clips get properly seated in the axle mount.



Figure 8: Right side emergency brake cable housing installed in axle bracket

- Reinstall the emergency brake cables to their respective eyelets. The cable may be under tension and may need to be pulled tight to get it to fit.

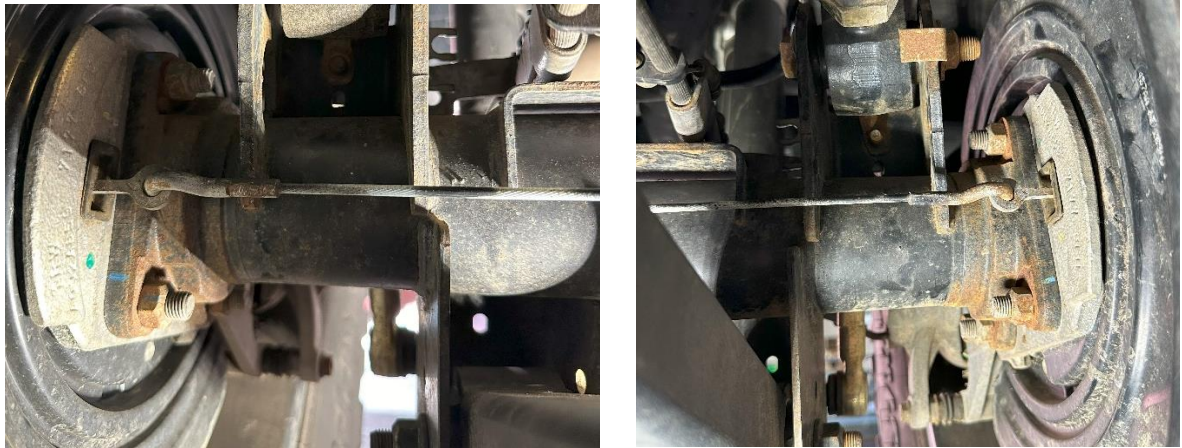


Figure 10: Left and right emergency brake cables returned to eyelet

10. The installation is now complete. Figure 11 shows the bracket fully installed with proper emergency brake cable routing.



Figure 11: Installation complete