

INSTALLATION MANUAL:

COR-1309502

PARKING BRAKE CABLE RELOCATION
BRACKET FOR JEEP WRANGLER 2018+ JL



What's Included:

1309502 Jeep Wrangler Parking Brake Cable Relocation Bracket (2018+, JL)			
QTY	Part Number	Description	Class/Grade
1	1309502AF	Jeep Wrangler Parking Brake Cable Relocation Bracket	7 Gauge Steel, Powder Coated
2	RG32111471	1" Inside Diameter Rubber Grommet – 3/16" Groove Width	Durometer - 60

Product Notes and Features:

If you have increased vehicle height, added superior articulating suspension joints, or using longer travel shocks, the factory emergency brake cables on your 2018+ Jeep Wrangler Unlimited may restrict rear suspension movement. This simple yet effective bracket is 100% bolt-on and allows the e-brake cable to be rerouted under the factory cross-member.

- Reuse your factory parking brake cables
- Provide a secure reroute location
- Designed with a clearance cut allowing maximum up-travel
- Laser-cut 7-gauge steel formed using the latest CAD software and manufacturing techniques
- Angled reroute cutouts to help guide the parking brake housings to their mounting locations
- Included zip ties to secure the parking brake housings further
- **NOT COMPATIBLE WITH 4XE MODELS!**



*****Take this product to a licensed professional if you are hesitant about the installation process!*****

Installation Instructions

TOOLS REQUIRED FOR INSTALLATION

- Basic hand tools
- Metric ratchet wrench set, (13mm)
- Metric socket set, (10mm)
- Vice Grips
- Pliers

1. Remove the parking brake cables from their eyelet locations. Do this on the rear axle for both the left and right sides. The cable will be hard to remove, so use vice grips or pliers to pull the eyelet towards the cable to obtain enough slack.

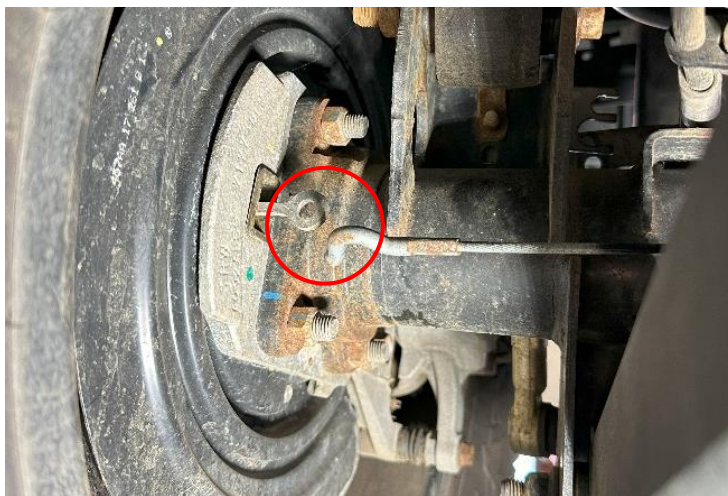


Figure 1: Rear left parking brake cable removed from eyelet

Installation Instructions

2. Remove the parking brake cable housing from its mounting bracket on the rear axle. Use a 13mm socket to compress all the spring clips all at once and slide the housing out and away from the bracket. See Figures 2 and 3 for this removal process.



Figure 2: Emergency brake cable housing spring clips fully compressed



Figure 3: Emergency brake cable housing fully removed from housing

Installation Instructions

3. Pull the parking brake cable housings from out and above the rear cross member and reroute them behind and under. Figure 4 shows the cable housings pulled out from above the cross member. Let them hang for now.



Figure 4: Parking brake cable housings pulled out from above the cross member and rerouted below the fuel line

Installation Instructions

4. Remove the two 10mm nuts retaining the rear differential wiring harness. They can be located on the rear cross member just above the rear differential. The plastic clips can be pulled off the bolt.

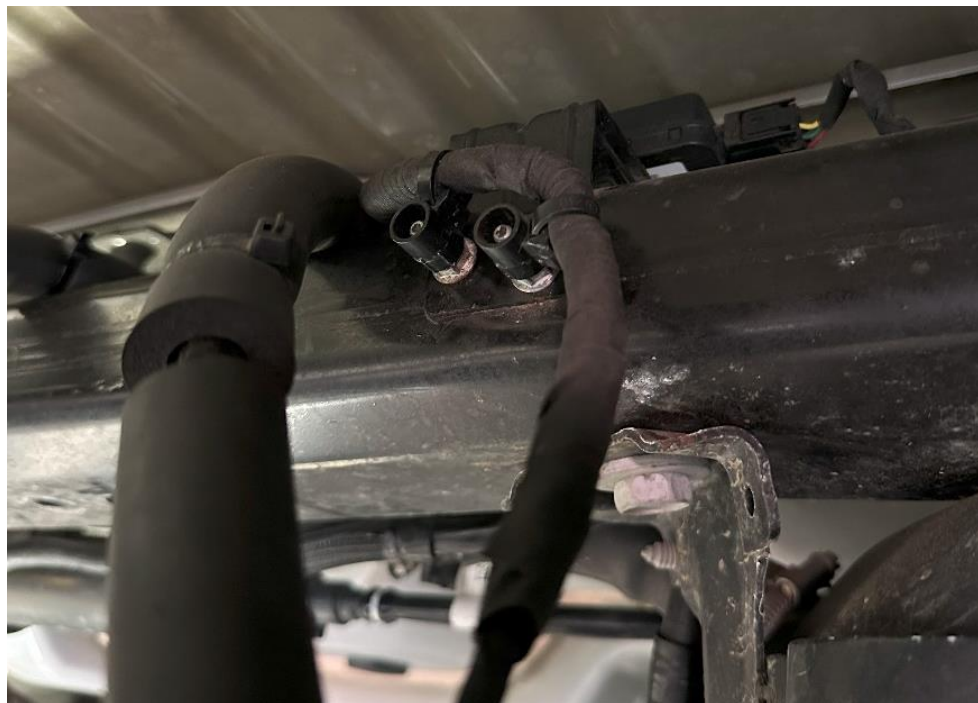


Figure 5: 10mm nuts (2) to be removed

Installation Instructions

5. Install the parking brake cable bracket on the studs where the 10mm nuts were removed (Step 4). As seen in Figure 6, the bracket has been installed with the bends on the end of the bracket facing away from you. Put the 10mm nuts back over the bracket and tighten.



Figure 6: Bracket installed with proper orientation, and 10mm nuts tightened

Installation Instructions

6. Install the included rubber grommets around the parking brake cable housings. Take care in moving these grommets up and over any zip ties or clips that may be in their way. Position the grommets on the housings so that they can forcibly slip into the bracket, as seen in Figure 8. Use the included zip ties to permanently fix the cable housings into place using the provided bracket holes.

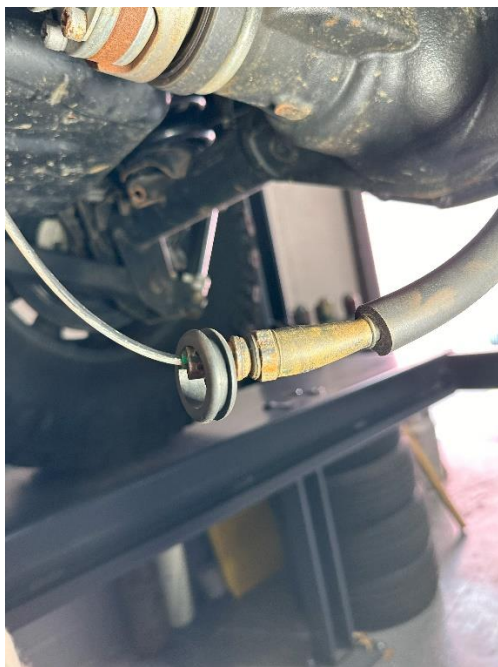


Figure 7: Grommet installed

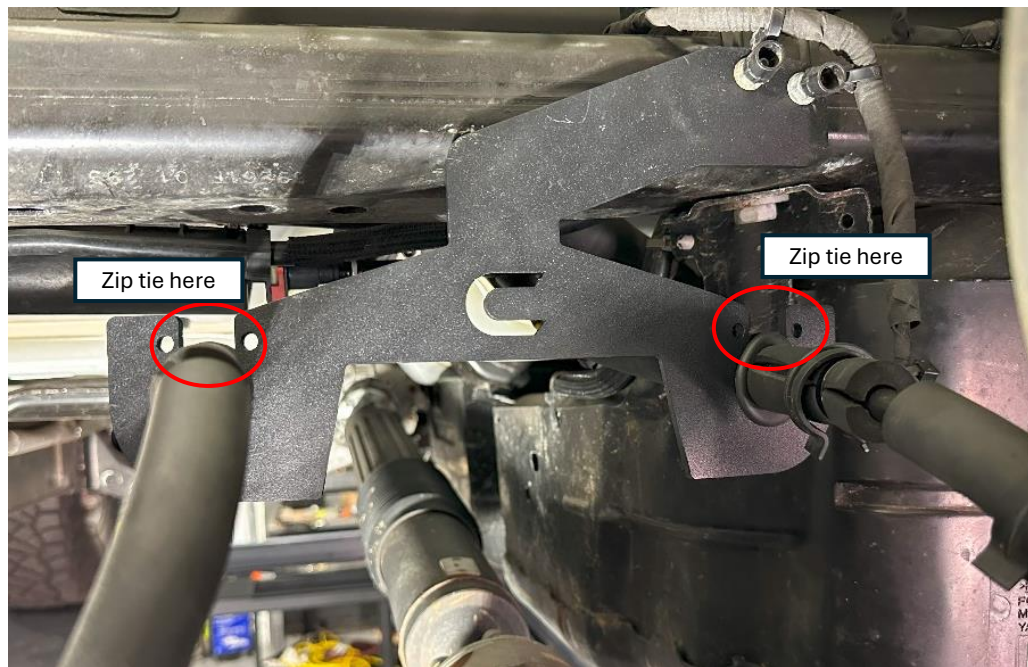


Figure 8: Cable housings installed

Installation Instructions

7. Return the left and right parking brake cable housings to their proper axle mounts. Ensure that the spring clips are properly seated in the axle mount. The housing will simply push into the bracket and lock in via the spring clip.

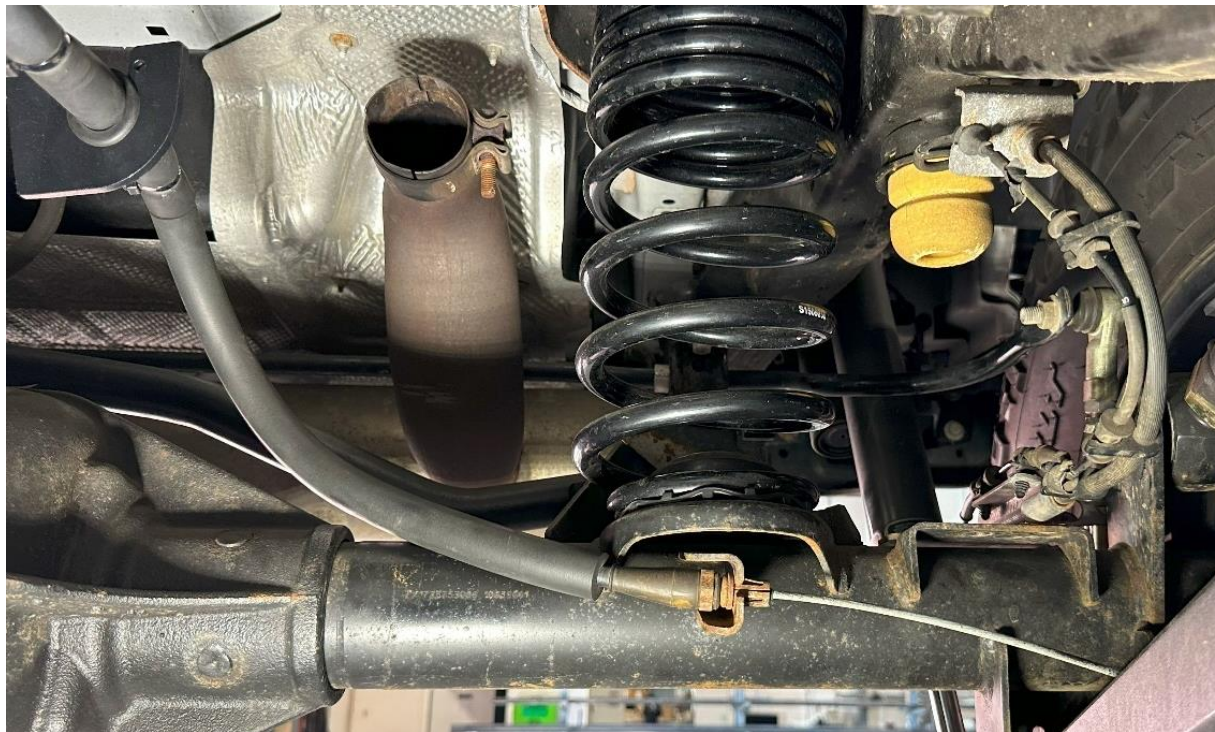


Figure 9: Parking brake cable housing reinstalled in axle bracket (rear right)

Installation Instructions

8. Reinstall the parking brake cables to their respective eyelet hooks. The cable may be under tension and may need to be pulled tight with vice grips. You may also need to pull the eyelet (as in Step 1) to obtain enough slack for this reinstallation.



Figure 10: Rear left cable reinstalled in eyelet hook



Figure 11: Rear right cable reinstalled in eyelet hook

Installation Instructions

9. The installation is now complete. Figure 12 shows the bracket fully installed with proper emergency brake cable routing.

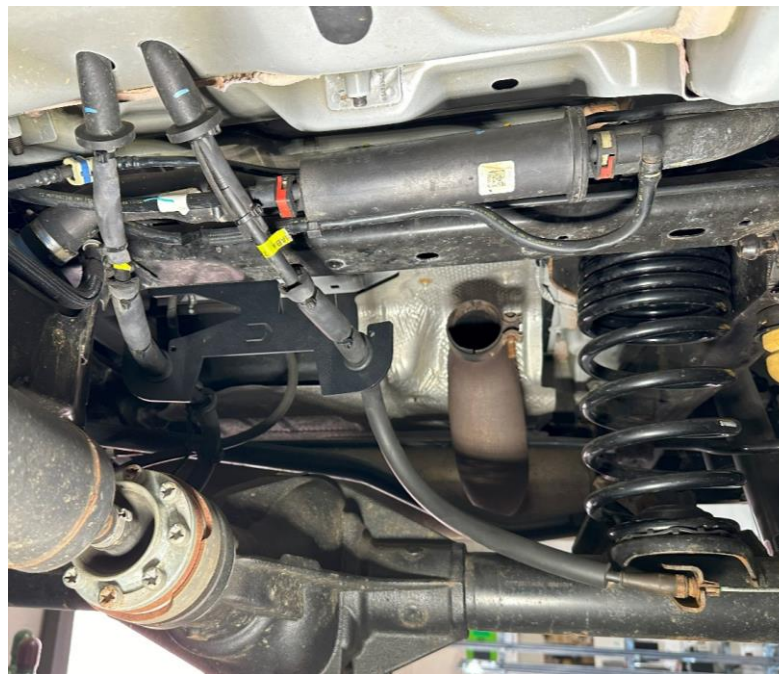


Figure 12: Complete installation

