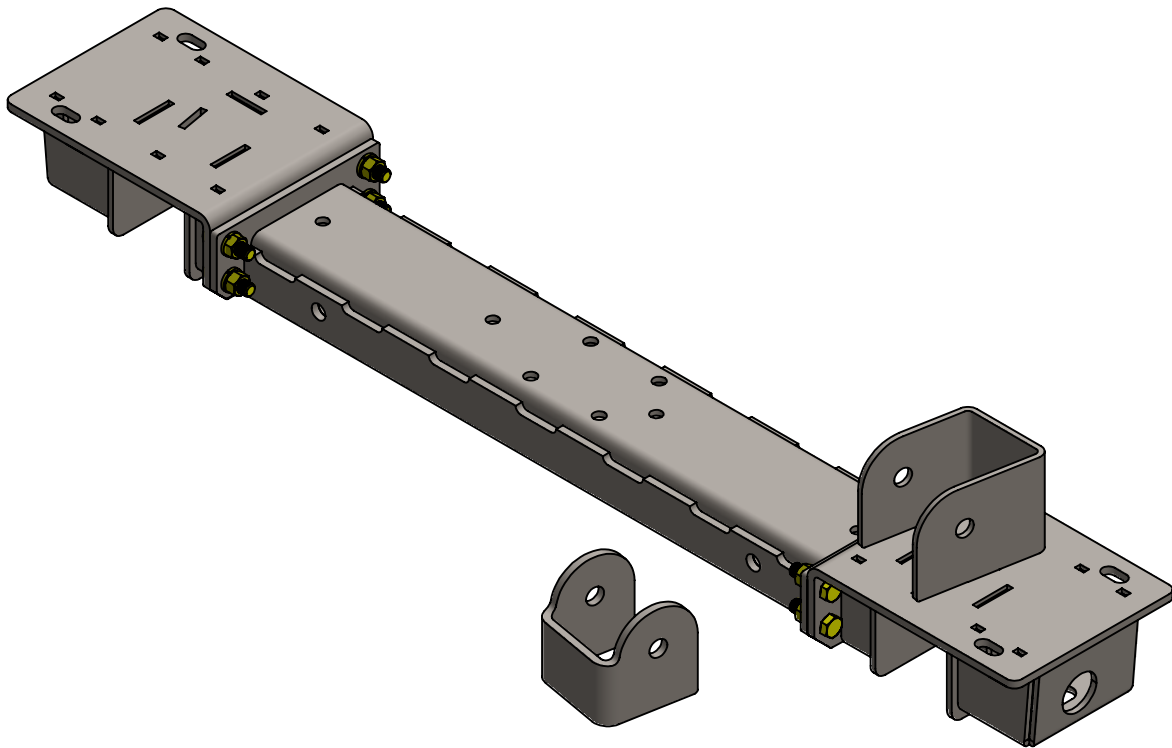


**CLAYTON OFF ROAD  
COR-2101300  
JEEP CHEROKEE FRONT 3-LINK 3 PIECE CROSS MEMBER (1984-2001, XJ)**



NOTES: This product requires general welding, fabrication and automotive mechanic skills. Welding should only be done by a competent welder. Clayton Off Road implies no guarantees or warranties and is not liable for improper installation. Some grinding and fitment may be required when installing this product. Every vehicle varies slightly and some fabrication may be required. For more information please visit our web site.

Refer to drawing views.

Step 1: Assembly cross member as shown.

Step 2: If installing a 3-link system refer to part number 1130300 instructions.

Step 3: Support vehicle drive line.

Step 4: Remove old cross member.

Step 5: Clean frame for welding.

Step 6: We provide new mounting hardware for bolting the new cross member in place.

Step 7: If you have stubs in the uni-body use the washers and nuts provided.

Step 8: If you have holes in the uni-body use the socket head cap screws provided.

Step 9: Lightly bolt new cross member into place.

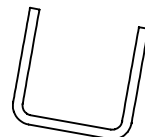
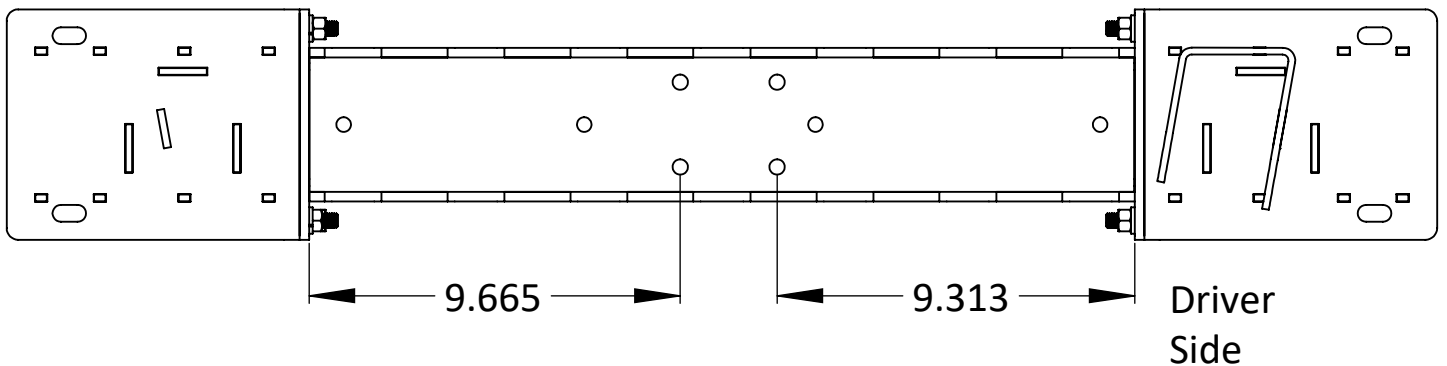
Step 10: Square and center cross member.

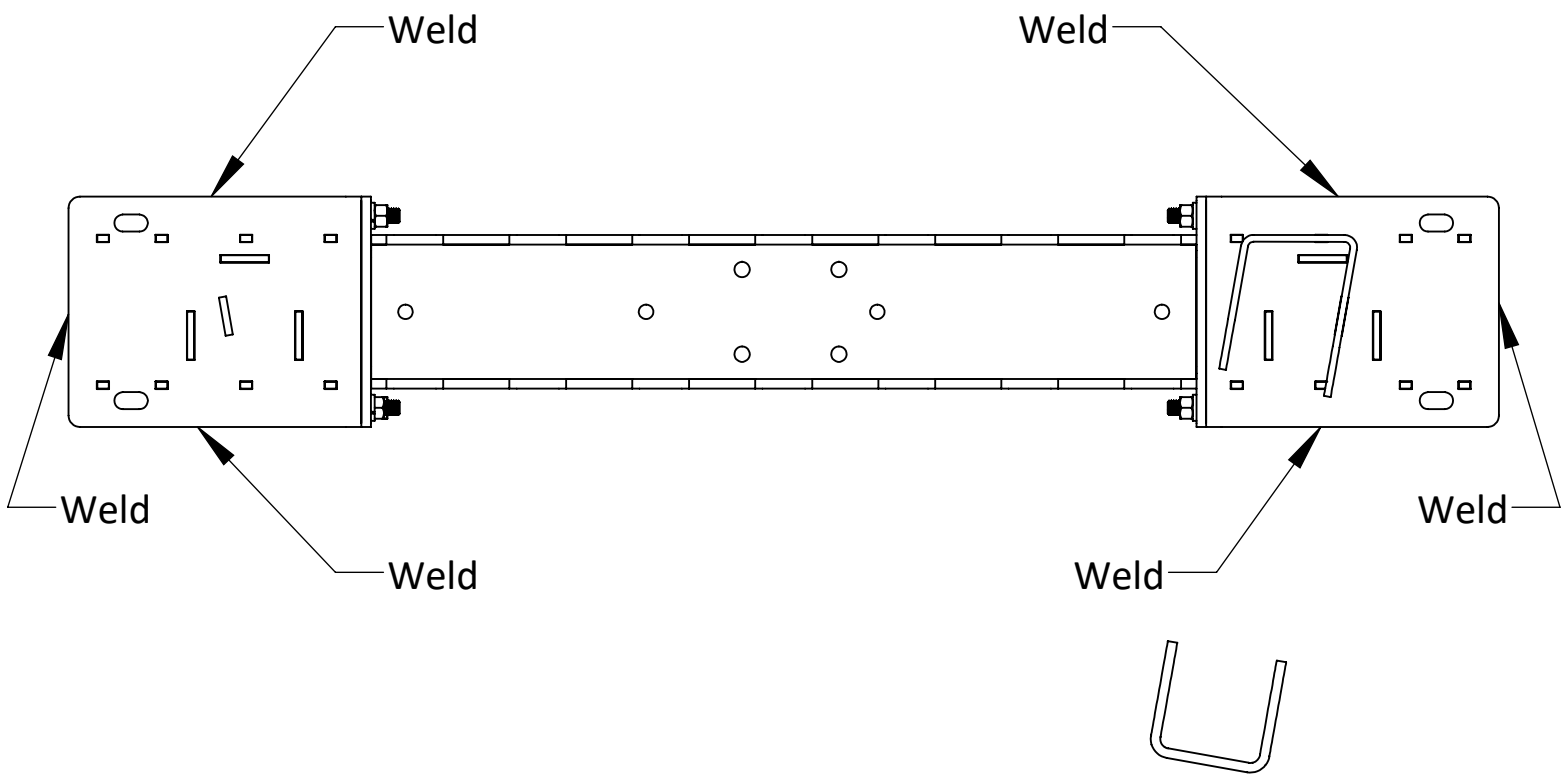
Step 11: Tighten bolts.

Step 12: Weld both sides along the front, back & end.

Step 13: Bolt transmission mount in.

Step 14: Paint cross member.

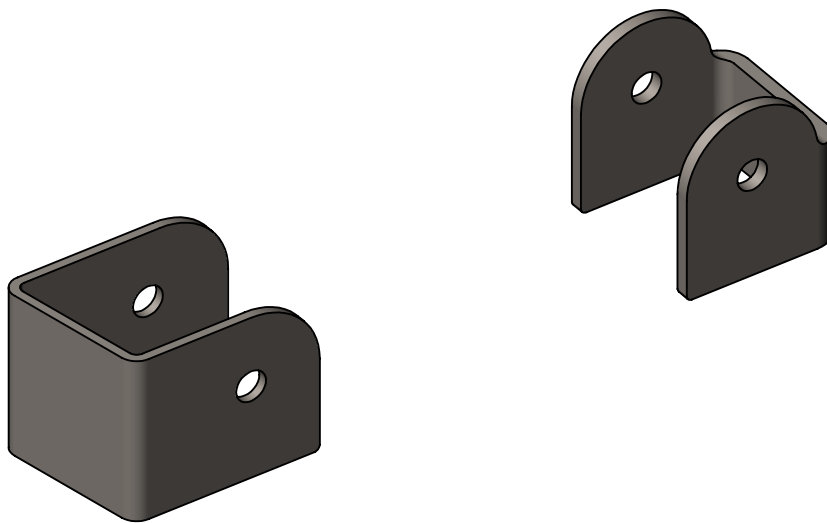




**CLAYTON OFF ROAD**

**COR-1130300**

**JEEP CHEROKEE & GRAND CHEROKEE 3-LINK MOUNT KIT (1984-2001 XJ,ZJ)**



NOTES: This product may require general welding, fabrication and automotive mechanic skills. Welding should only be done by a competent welder. Clayton Off Road implies no guarantees or warranties and is not liable for improper installation. Some grinding and fitment may be required when installing this product. Every vehicle varies slightly and some fabrication may be required. For more information please visit our website.

## 2101300 Jeep Cherokee Front 3 Piece Cross Member (1984-2001 XJ)

Step 1: Locate 3-link cross member bracket as shown below.

Step 2: Check fit of control arm in bracket.

Step 3: Tack bracket in place.

Step 4: Weld bracket in place on 3 sides.

Step 5: Install cross member refer to instructions for part number 2101300.

Step 6: Locate 3-link axle bracket on optional PN: 1130101 truss or axle housing.

Step 7: Check fit of control arm in bracket.

Step 8: Tack bracket in place.

Step 9: Weld bracket in place on 3 sides.

