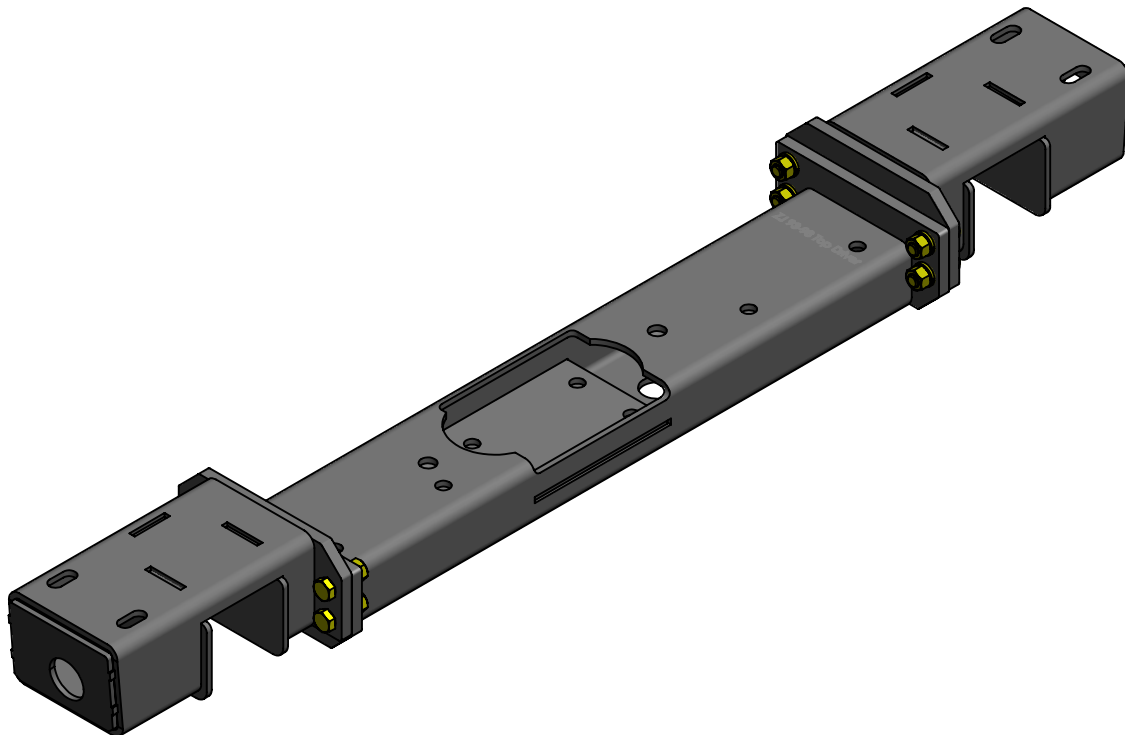


**CLAYTON OFF ROAD  
COR-2104610  
JEEP GRAND CHEROKEE FRONT 3 PIECE CROSS MEMBER (1993-1998, ZJ)**



NOTES: This product requires general welding, fabrication and automotive mechanic skills. Welding should only be done by a competent welder. Clayton Off Road implies no guarantees or warranties and is not liable for improper installation. Some grinding and fitment may be required when installing this product. Every vehicle varies slightly and some fabrication may be required. For more information please visit our web site.

Refer to drawing views.

Step 1: Assembly cross member as shown.

Step 2: If you have a 96-98 model year slide transmission mount into cross member and weld in place using the slots in the cross member. Be sure to lineup with the access holes in cross member.

Step 3: Support vehicle drive line.

Step 4: Remove old cross member.

Step 5: Clean frame for welding.

Step 6: Lightly bolt new cross member into place.

Step 7: Square and center cross member.

Step 8: Tighten bolts.

Step 9: Weld both sides along the front, back & end.

Step 10: Bolt transmission mount in.

Step 11: Weld end caps on with access holes aligned.

Step 12: Paint cross member.

