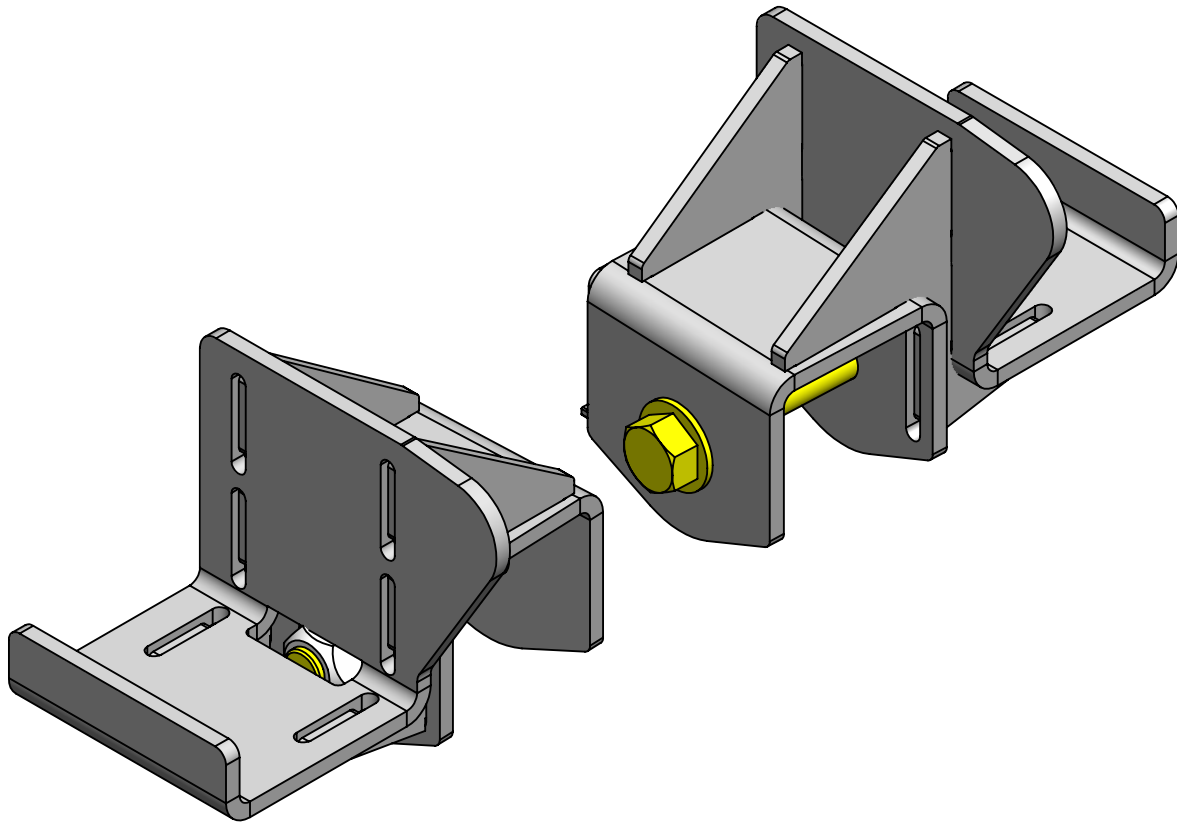


**CLAYTON OFF ROAD  
COR-2209100  
JEEP WRANGLER FRONT FRAME BRACKET 2018 & UP, JL/JT**



NOTES: This product may require general welding, fabrication and automotive mechanic skills. Welding should only be done by a competent welder. Clayton Off Road implies no guarantees or warranties and is not liable for improper installation. Some grinding and fitment may be required when installing this product. Every vehicle varies slightly and some fabrication may be required. For more information please visit our website.

- Step 1: Position the vehicle for the install either on the ground or on a lift.
- Step 2: Secure the frame and front axle.
- Step 3: Support the driveline of the vehicle.
- Step 4: Remove the plastic gas tank shield.
- Step 5: Remove the cross member.
- Step 6: Remove the exhaust at the flange in front and the coupling before the resonator in the rear.
- Step 7: Remove both lower front control arms.
- Step 8: Cut off the stud on the frame for the gas tank shield.
- Step 9: Remove the lower control arm brackets from the frame.
- Step 10: Remove upper control arm mounts if using 4-link system.
- Step 11: Grind frame smooth.
- Step 12: Slide brackets over frame and position properly, dimensions are on page 3 of these instructions. 3/16" back from the slot in the frame.
- Step 13: Mark the location of the brackets with a sharp object.
- Step 14: Remove brackets and clean all paint around the areas to be welded.
- Step 15: Put brackets into position and secure them for welding.
- Step 16: Weld completely around the enter outside edge of the brackets.
- Step 17: Paint frame and brackets.
- Step 18: Re-install exhaust and cross member.
- Step 19: Refer to instructions for lower control arms.

