

INSTALLATION MANUAL:

COR-5110200

JEEP GLADIATOR REAR SWAY BAR BRACKET

2020+ JT



Included Items

| 5110200 Jeep Gladiator Rear Sway Bar Reinforcement Brackets (2020+ JT) | | | |
|--|-------------|--|-------------|
| QTY | Part Number | Description | Class/Grade |
| 1 | 5110200L | Jeep Gladiator Rear Frame Rail Bracket Driver Side | N/A |
| 1 | 5110200R | Jeep Gladiator Rear Frame Rail Bracket Passenger Side | N/A |
| 2 | 11114704 | M12-1.5 x 70mm DIN 960 Yellow Zinc Finish Hex Cap Screw | Class 10.9 |
| 2 | 0145171 | M12-1.5 DIN 985 Zinc Finish Steel Nylon Insert Lock Nut | Class 8 |
| 4 | 11103710 | M12 x 24mm OD DIN 125 Yellow Zinc Finish Steel General Purpose Flat Washer | Grade HV200 |



Product Notes and Features:

The Jeep Gladiator Rear Sway Bar Reinforcement Bracket Kit includes all the necessary hardware to reinforce the rear sway bar frame brackets on your Jeep JT with a better mounting solution.

- Innovative, double-shear design that significantly decreases the stress applied to the sway bar mounting locations during extreme driving conditions, designed to be used in conjunction with the original sway bar bracket
- Class 10.9 M12-1.5 x 70mm bolts and washers for securing sway bar links
- M12-1.5 NyLock Nuts are included for customers who have already damaged the rear sway bar frame brackets
- Repair the factory sway bar bracket if it is already damaged **before** installing this product

Installation Instructions

TOOLS REQUIRED FOR INSTALLATION

- Basic hand tools
- Metric ratchet wrench set, (10mm, 13mm, 15mm, 19mm)
- Vice grips
- Cut-off wheel or plasma cutter (Optional)

*****Take this product to a licensed professional if you are hesitant about the installation process!*****

1. Position the vehicle on a flat surface and locate the section of the frame rail located just behind the rear tires. The rear tires do not need to be removed for this installation.



Figure 1: Vehicle parked on flat surface

Installation Instructions

2. Locate the (2) frame bolts fastening the brake light wiring harness and remove them with a 13mm socket. You will reuse these bolts, as well as the bracket. Remove the sway bar bolt using a 15mm socket. You are given a longer M12-1.5 x 70mm bolt to use. Finally, remove the brake line bracket using a 10mm socket and move it out of the way.

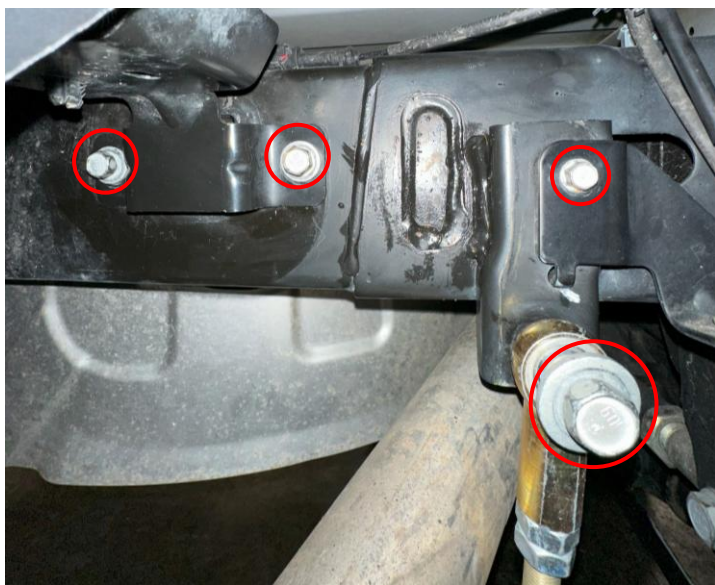


Figure 2: Bolt locations to be removed (passenger side)

NOTE:
Your vehicle may have a black heat shield installed at this location. You will need to remove and discard the shield, as it will not be reused.



Figure 3: Bolts removed

Installation Instructions

3. With the wiring harness bracket and bolts removed, place the bracket onto the frame, with the back “C” wedge plate sitting flush against the upper section of the original rear sway bar frame bracket.

Begin threading the new M12-1.5 x 70mm bolt through the new bracket, sway bar link, and into the PEM on the other side of the original frame bracket. Once a couple of threads are engaged, swing the bracket up and over the square cross member extrusion, and reinstall the frame rail bolts through the holes with the wiring harness bracket mounted over the new sway bar bracket (See Figure 4)



Figure 4: Installed bracket (driver side)

TIP:

If the new bracket bolt holes are misaligned with the frame holes (while the new sway bar bolt is installed), the old frame bracket may have been slightly bent/damaged.

You can install the old sway bar bolt into the PEM and grab the bolt head with vice grips, and forcibly bend the old bracket until you can thread each bolt in by hand. Be careful not to overbend. Doing this with the new bracket installed may be easier depending on how damaged the old bracket is.

Installation Instructions

4. Tighten the bracket down, alternating from the sway bar bolt to the frame rail bolts every couple of turns. When the new bracket is sitting flush against the frame, tighten the frame bolts down. Torque the sway bar bolt to 60 ft-lbs.

Once the mounting bolts are tight, you may reinstall the 10mm bolt with the brake line bracket. Align the key on the bracket to the middle hole on the “C” wedge plate of the bracket, as seen in Figure 5.



Figure 5: Brake line bracket mounted over “C” wedge plate

Installation Instructions

5. Repeat steps 2-4 on the opposite side of the vehicle, and the installation is complete. Please review the post-installation checklist before driving your vehicle.



POST-INSTALLATION CHECKLIST:

- M12-1.5 x 70m sway bar bolts are torqued to 60 ft-lbs
- The original frame rail bolts are reinstalled and tightened down
- The new sway bar reinforcement brackets sit flush against the frame rail
- The brake line bracket is reinstalled over the "C" plate

